



June 2011

## Our Next Chapter Meeting – June 9, 2011

The next PMI breakfast meeting will be held on **Thursday, June 9, 2011 from 7:15 a.m. to 9:00 a.m. at the Clarion Hotel and Convention Center, 525 33<sup>rd</sup> Avenue SW, Cedar Rapids, Iowa.** The Clarion Hotel and Convention Center phone number is **(319) 366-8671.**

### Program Title:

“Current Software project practices and potential near future pitfalls” by Raman Aravamudhan

### About the Program:

In the era of global software hubs and modern technologies, the demands on software teams and project managers have increased by leaps and bounds. Heterogeneous project environments, high user expectations and stringent budgets are the order of the day. The industry has responded with a spiral evolution of Software development processes and offshore development mantra. Lessons learnt from a predominantly waterfall class of processes have resulted in prolific Agile prominence. Do we now have a matured process? Reactive response to process defects is too big a risk. A discussion of the pitfalls embedded in current processes is an attribute of a matured process and the prime objective of this topic.

### About the Speaker:

Raman Aravamudhan has over 25 years of software engineering experience; He has served as a counselor for other Project managers, assisted in development of software processes, worked as a consultant at High Maturity organizations and has been involved in projects winning awards like the IBM's Best Supplier Quality Award. Currently, he leads the software development consulting efforts at Ramaanchar Technologies, Inc. (<http://www.ramaanchar.com>) located in University of Iowa Research Park. As an Adjunct Faculty, at the University of Iowa Computer Science department, he teaches Software process related course for graduate and senior students.

**Cost:** Chapter Members, \$13; Guests, \$20

**RSVP:** Please confirm your attendance no later than Friday, June 5, 2011, to [programregistration@pmieasterniowa.org](mailto:programregistration@pmieasterniowa.org). Use MAY REGISTRATION in the subject line. Cancellations must be received by midnight Sunday, June 5, 2011 to avoid being charged as a no-show for this chapter event.

### Program Schedule:

7:15 - 7:30 Registration, breakfast, and networking  
7:35 - 7:45 Chapter announcements by Chapter President/Officers  
7:45 - 8:45 Presentation / Discussion  
8:50 - 9:00 Final announcements and wrap-up

### Inside This Issue

1. Meeting news
2. President's Corner
3. Chapter Puzzle
5. Director of Programs
6. PDD 2011 Update
7. Important Dates
8. Who's Who

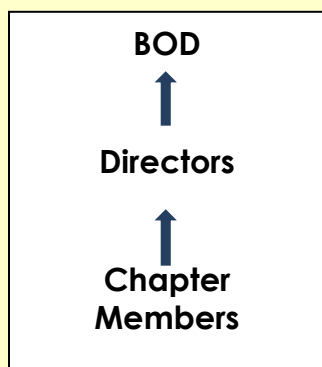
## President's Corner – How to be a Volunteer for our Eastern Iowa Chapter

*By Tammy Sweat*

Some of you may have thought about volunteering to help our chapter, but may have been reluctant for reasons of your own. Hopefully I can answer questions regarding the commitment it takes to be a volunteer and what types of people strengthen our leadership team.

First, let me explain the two types of levels currently in place for volunteers. The top level also referred to as the Board of the Directors (BOD), consists of the President and the following VP roles: Communications and Publicity, Education, Finance, Operations, Outreach and Past President. All of the volunteers in these roles are voted in by our membership except the Past President. Every year a committee formed of past presidents reaches out to both the current BOD members and the Director volunteers to see who will be nominated for the ballot.

The BOD meets in person once a month to vote on new agenda items and attends a monthly conference call. The BOD is also in constant contact via email to discuss issues at hand. The BOD must stay within the bounds of the chapter charter, by-laws and other governing documents in place. Each year the newly established BOD sets the strategic direction and budget for the chapter and represents the chapter by traveling to PMI conferences. Most of the VP roles have one or two Directors who report to them to help them meet the goals and objectives they have set for the year.



The Director roles are more tactical in nature. The Director volunteers provide support to the BOD by carrying out requests and work within their set job description. Directors also attend a monthly conference call. Directors are the “doers”, although for some events, such as the PDD, the BOD may also take a more active role. The following is a list of the current Director roles: Certifications, Individual Outreach, University Outreach, Logistics, Marketing, Member Relations, Newsletter, Professional Development, Programs and Website and Technology.

Trying a Director position is a great way to grow new skills. A volunteer does not need to be an expert in the chosen area to be a successful Director. In some cases, bringing in a skill is necessary, such as the Director of Website and Technology. In other cases, any professional who is open and willing to learn new skills, and able to work in a team environment will be successful. As each Director role is unique so is the amount of time each month it takes to fulfill it.

Watch for open Director Positions in the newsletter each month. When you identify one that you are interested in, please approach any VP or Director to let them know your interest. If the BOD is interested in a specific skill set for the position, they may ask that you identify how you would satisfy that skill. The BOD then votes in the new Director and you are off in your new role. Guidance is provided by the VP that the Director reports to.

## Our Chapter's Piece of the PMI Puzzle

*By Carol Scherrman, VP of Operations*



You might not give much thought to how our chapter aligns with the Project Management Institute's (PMI's) global operations. You may not know how we stack up with other chapters in our state or region. Here is PMI – by the numbers:

<b>346,730</b>	Number of PMI members worldwide (as of 03/31/2011)
<b>15,142</b>	Number of PMI members in Region 2 (as of 04/30/2011)
<b>1,069</b>	Number of PMI members in the three Iowa chapters (as of 04/30/2011)
<b>287</b>	Number of Eastern Iowa Chapter members (as of 04/30/2011)

As you might know, there are three chapters that serve Iowa: the Central Iowa Chapter out of Des Moines (617 chapter members), the Eastern Iowa Chapter serving the Cedar Rapids/Iowa City corridor (287 members), and the Quad Cities chapter (171 members).

Within our region—that serves PMI members in Illinois, Indiana, Iowa, Minnesota, Nebraska, North Dakota, South Dakota, Wisconsin, and the Canadian provinces of Manitoba and Saskatchewan—the largest chapter is the Chicago land Chapter with nearly 4,000 members. The smallest chapter is the Southwestern Indiana Chapter with 63 members. Of the 21 chapters in our region, we have the 12<sup>th</sup> highest membership.

Globally, there are 423,515 certified Project Management Professionals (PMPs)®. The PMI Eastern Iowa Chapter boasts 174 PMPs®, which is 60% of our membership, validating that our chapter is filled with a diverse group of experienced, committed, and knowledgeable project managers.

Although we are small in the grand scheme of the PMI world, we strive to offer best in class service to our members. Some of the benefits our chapter offers that we have learned not all chapters in our area provide are:

- Monthly newsletters – many chapters either have no newsletter or provide only quarterly newsletters.
- Monthly chapter meetings – some chapters hold meetings every other month or quarterly.
- Full-service website – some chapters do not have a dedicated website for chapter business. As our primary communication tool, the Eastern Iowa Chapter is excited to unveil its new and improved site in June.
- Social networking – we work to keep in touch the way you want to keep in touch by maintaining LinkedIn and Twitter accounts for the chapter.
- Professional Development Day (PDD) – we are planning our fourth annual PDD, which offer PMPs® the opportunity to earn from 5-8 professional development units (PDUs).

Your volunteer board and committee directors work hard to provide the PMI Eastern Iowa Chapter members the best services at a good value, while being fiscally responsible with the chapter's assets.

Your feedback is always welcome.



## The Long and Winding Road...that leads to PMPlatform

Carol Scherrman, VP of Operations

As you all know, the Eastern Iowa Chapter's Leadership Team has been diligently working over the past several months to implement a new website, content management system, e-mail platform, and online registration solution to enhance communication to our membership and streamline some of the processes that the leadership team is required to perform as a fully functioning

chapter.

As noted in a previous issue of the newsletter, the chapter is moving to PMPlatform, an enterprise system developed by the PMI Central Indiana Chapter specifically to meet the needs of chapters and chapter members. In November 2010, we began work on the deployment, which included:

- Building a staging site to add content.
- Migrating content from our current systems.
- Adding new content based on chapter needs and frequently asked questions.
- Establishing security certificates for the new site.
- Creating new e-mail accounts for the leadership team.
- Setting up the appropriate merchant accounts and PayPal systems to support our new online registration features.
- Documenting site policies and procedures.
- Granting permissions to the leadership team for website maintenance.
- Understanding and testing imports of the member data file from PMI.
- Testing payment systems.
- Validating content.

We are excited to announce that our target "go live" date for the new site is **Friday, June 17, 2011**. In preparation for this cutover, be on the lookout for the following:

- **June 9:** At the June chapter meeting, we will give a short demonstration of how to access the site and register for an event.
- **June 15:** We will send a reminder to chapter members announcing the cutover on June 17.
- **June 17-19:** As the cutover progresses and we export member data into the new site, you will receive an automatic "welcome" e-mail from the chapter. This e-mail will include your login credentials and a link to activate your account.
- **June 27-30:** We will send additional reminders and tips about how to register for events. Beginning with the July chapter meeting, you will register (and pay) via the website. We will no longer take RSVPs via e-mail and the higher "pay at the door" rates will be in effect.

If you have any questions or concerns, please direct them to [operations@pmieasterniowa.org](mailto:operations@pmieasterniowa.org).

**Travis Zweibohmer**  
**Director of Programs**



Please join us in welcoming Travis Zweibohmer as the PMI-Eastern Iowa Chapter's new Director of Programs.

Travis is a 14 year Eastern Iowa resident and an Iowa native, now residing in Hiawatha. After graduating from Decorah Senior High School, he moved to Ames and earned a degree in Industrial Technology from Iowa State University.

While attending ISU he was offered a mechanical engineering position at Goss Graphics Systems and upon graduation moved to Cedar Rapids where he met his wife Britta Lee. They married and had two children, Matthew James and Kelsey Lee.

During the early years of Travis' growing family and career, he found the time to earn an MBA from St. Ambrose University. At that time, Travis was employed as an industrial engineer at Rockwell Collins and worked his way into the role of Program Manager, which is where his passion for program management began.

Earlier this year Travis accepted a great opportunity to work in program management at Wabtec Railway Electronics, also located in Cedar Rapids. This new opportunity provided a supportive environment for him to achieve another of his goals and earn his PMP credentials.

Travis is excited to be working with the PMI-Eastern Iowa Chapter and eager to get to know all of its committed and dedicated members. If you have any ideas for monthly meeting topics or thoughts on guest speakers, please contact Travis at [programs@pmieasterniowa.org](mailto:programs@pmieasterniowa.org).

### PDD 2011 Update

*Suzanne Prymek, PMP*



Please save the date for the annual PMI Eastern Iowa's Professional Development Day (PDD). It is set for Thursday, September 29<sup>th</sup> 2011.

Our theme this year will be "Harvesting Your Leadership Skills". Due to feedback from our recent survey, we are targeting soft skills presentations at our event this year. The event will be worth eight PDUs this year.

Discussions are currently underway with potential speakers for this event. Stay tuned to updates published in our newsletter and on our website as they become available regarding presentation titles, abstracts and bios for our speakers and registration and pricing details.

---

### Request for Sponsorships for the PMI Eastern Iowa Professional Development Day (PDD)

*Suzanne Prymek, PMP*

This year we are very excited to have two exceptional speakers for the PMI Eastern Iowa Professional Development Day Event. The theme this year is "Harvesting Your Leadership Skills". Due to feedback from our recent survey, we are targeting soft skills presentations at our event this year. The event will be worth eight PDUs this year.

In order to keep the event costs down for our members we are once again seeking any interested businesses or organizations who would like to be sponsors of this event. If your organization would be a potential sponsor, please contact Sue Prymek, VP of Outreach with a contact name and number.

We have an exciting program lined up this year and are looking forward to hosting this annual local event where members can learn and network.

## DATES TO REMEMBER

JUNE 2011						
S	M	T	W	T	F	S
			1	2	3	4
5	6	7	8	9	10	11
12	13	14	15	16	17	18
19	20	21	22	23	24	25
26	27	28	29	30		

5 – World Environment Day  
 9 – PMI Eastern Iowa Chapter Meeting  
 19 – Father's Day  
 21 – First Day of summer

JULY 2011						
S	M	T	W	T	F	S
					1	2
3	4	5	6	7	8	9
10	11	12	13	14	15	16
17	18	19	20	21	22	23
24	25	26	27	28	29	30
31						

4 – Independence Day  
 14 – PMI Eastern Iowa Chapter Meeting

AUGUST 2011						
S	M	T	W	T	F	S
	1	2	3	4	5	6
7	8	9	10	11	12	13
14	15	16	17	18	19	20
21	22	23	24	25	26	27
28	29	30	31			

5 – Sister's Day  
 11 – PMI Eastern Iowa Chapter Meeting

### **Chapter WHO's Who?**

<b>Role</b>	<b>Name</b>
President	Tammy Sweat, MSPM, PMP®
VP of Communications and Publicity	Behram Kasad, MBA
VP of Education	Srikanth C Kamineni PMP®
VP of Finance	Brian Thorn, PMP®
VP of Operations	Carol Scherrman, PMP®
VP of Outreach	Suzanne Prymek, PMP®
Past President	Bhaskar Pulikal, MBA, CISA, PMP®
Director of Certifications	Denise Boeding, PMP®
Director of Individual Outreach	Mary Phelan, PMP®
Director of University Outreach	Bob Sanders, PMP®
Director of Logistics	Brian Wayling
Director of Marketing	Jennifer James, PMP®
Director of Member Relations	Geri Stivers, PMP®
Director of Newsletter	Sathian Devarajan, MBA, PMP®
Director of Professional Development	Jacquie Haltmeyer, PMP®
Director of Programs	Travis Zweibohmer, PMP®
Director of Website and Technology	Mark Bazzell, MBA, PMP®