



July 2011

Our Next Chapter Meeting – July 14, 2011

The next PMI breakfast meeting will be held on **Thursday, July 14, 2011** from **7:15 a.m. to 9:00 a.m.** at the **Clarion Hotel and Convention Center, 525 33rd Avenue SW, Cedar Rapids, Iowa**. The Clarion Hotel and Convention Center phone number is (319) 366-8671.

Program Title:

"Context Driven Project Leadership: One Size Doesn't Fit All" by Kent J. McDonald

About the Program:

The "one size fits all" approach to project leadership is inherently flawed. Practitioners have found that the two primary attributes of uncertainty and complexity of a project provide guidance to effective project leadership and governance. Complexity includes project composition, such as team size and criticality, while uncertainty includes both market and technical uncertainty. The approach and leadership style required for a simple, stable project is quite different than what is required for highly uncertain, highly complex projects. During this session, Kent McDonald will demonstrate how to use the Context Leadership Model to determine the appropriate approach and leadership style for a project based on its uncertainty and complexity.

About the Speaker:

Kent J. McDonald helps organizations solve their problems and coaches business analysts and project managers. His more than 15 years of experience includes management and product development in a variety of industries, including financial services, health insurance, performance marketing, human services, nonprofit, and automotive. Kent currently delivers business analysis training for B2T Training.

Inside This Issue

1. Meeting news
2. President's Corner
3. Website Update
4. Team Morale
5. PDD Information
7. PDD 2011 Update
9. Sponsor Information
10. PMP Prep Workshop
11. Who's Who

Cost: Member Online \$13.00, Member @ Door \$20.00, Non-member Online or @ Door \$20.00

Register:

Our new online registration system is operational. Register for this meeting at www.pmieasterniowa.org. Login with your User ID and password, then click **Events > Monthly Program Meetings > July 2011 Monthly Meeting**. See the article on Page 3 for more detailed instructions on how to register. Pre-registration for the event expires at midnight on July 10, 2011.

Program Schedule:

7:15 - 7:30	Registration, breakfast, and networking
7:35 - 7:45	Chapter announcements by Chapter President/Officers
7:45 - 8:45	Presentation / Discussion
8:50 - 9:00	Final announcements and wrap-up

President's Corner

Start a Project Management Career and Obtain a CAPM® Certification

Tammy Sweat, PMP®

The following information is located on the PMI Global website located at: www.pmi.org. Chapter members with a PMP® certification would not try to obtain a CAPM®, as the PMP® certification demonstrates application of project management practices; the CAPM demonstrates understanding of the practices.

PMI's Certified Associate in Project Management (CAPM)® is a valuable entry-level certification for project practitioners. Designed for those with less project experience, the CAPM® demonstrates your understanding of the fundamental knowledge, terminology, and processes of effective project management.

Whether you're new to project management, changing careers, or already serving as a subject matter expert on project teams, the CAPM can get your career on the right path or take it to the next level.

Who should apply?

If you're a less experienced project manager looking to demonstrate your commitment to project management, improve your ability to manage larger projects and earn additional responsibility, and stand out to potential employers, the CAPM certification is right for you.

CAPM Requirements

To apply for the CAPM, you need to have:

- A secondary diploma (high school or the global equivalent)
- AND
- At least 1,500 hours experience OR 23 hours of project management education.

If you have logged hours leading and directing projects, you may want to see if you are ready for the [Project Management Professional \(PMP\)® credential](#).

How to Apply

To apply for the CAPM, [register and log in to our online system](#) to get started. A [printable CAPM application form](#) is also available.

- **Need more information?** Get more information on the CAPM's role and requirements. For a more detailed look, [consult the CAPM handbook](#).
- **If you're ready to take the exam,** the [CAPM exam preparation](#) can get you started.

Maintain Your CAPM

As a CAPM certification holder, you do not need to earn PDUs. Instead, you take a re-exam before the end of your five-year certification cycle.



Successful Launch of New Chapter Website

Carol Scherrman, VP of Operations

The Eastern Iowa Chapter Leadership Team's diligent efforts over the past several months to implement a new website, content management system, e-mail platform, and online registration solution paid off with the successful launch of the new site on June 18, 2011.

By now, all chapter members should have received their Welcome e-mail messages with their login credentials for the new site. Did you remember to activate your account by clicking the link that was embedded in the Welcome e-mail? This is an important step to begin using all the new features of the new site. If you did not receive a Welcome e-mail or have experienced any issues logging in to the website (www.pmieasterniowa.org), send an e-mail to operations@pmieasterniowa.org.

With the launch of the new site, our automated registration system for chapter meetings is now operational. Beginning with the July chapter meeting, all members and guests will register for chapter meetings via the new website. To register, follow the steps below.

1. Access the website at www.pmieasterniowa.org.
2. Login to the site using your member login credentials. (Non-chapter members must create a login ID to register for a chapter meeting.)
3. Under the gray **Events** tab, click **Monthly Program Meetings**.
4. Under the 2011 Calendar, click the link of the meeting for which you wish to register.
5. In the pop-up window, scroll down to the **Details** section.
6. Click **Add to Cart** for the appropriate registration fee. (With the new system in place, chapter members will pay \$13 if payment is made online in advance or \$20 if they choose to pay at door. Non-members and guests will pay \$20 whether they pay online in advance or at the door.)
7. Confirm that you have selected the correct meeting, then click **Checkout**.
8. If paying online, enter appropriate information for PayPal or enter your credit card information. Note: The PMI Eastern Iowa Chapter does not retain credit card information; therefore, you will need to enter this information each time you register/pay for an event.
9. Click **Review Order**.
10. If you need to make changes, click **Back**. If correct, click **Place Order**.
11. You will receive a confirmation e-mail.

With the new online registration system, please pay particular attention to the registration and cancellation deadlines for each event. Registration closes on the posted date and the system will not allow any registrations after that time. Similarly, if you are unable to attend an event for which you have registered, you must cancel and request a refund by the cancellation date. For the July chapter meeting, registration closes and the cancellation deadline is midnight on July 10, 2011.

If you have any questions or concerns, please direct them to operations@pmieasterniowa.org.

Tips for Re-energizing your Project Team

Suzanne Prymek, PMP

Are your team members lacking their normal enthusiasm? Are they running out of steam and getting burned out? If your team members are showing signs of diminished morale, here are some tips to use for re-energizing them and getting your team members back on track.

1. It may be time for some team building. On one project I started a weekly contest called Integrated Master Schedule Super Team Member of the Week. I bought dollar prizes and made certificates. Each week, I would look at the list of team members who provided their inputs to the schedule on time and accurately and would make this award. After two weeks, there was a renewed enthusiasm from most team members, and they all talked about wanting to be the next Super Team Member of the Week. Cost was \$1 per week.
2. Model good behavior. As project manager, you can inspire your team members with providing them an example to model.
3. Schedule a team activity that is not focused on the project. You could schedule a team potluck or snack day. This allows time for team members to focus on a small event that doesn't center on your project issues and allows for some team building. Team members will be able to take time to connect with each other.
4. Take the time to compliment and appreciate all the efforts your team member have expended on the project and ensure that they know you are aware of the accomplishments that have occurred. Try not to focus on the negative.
5. Create weekly team goals. This could occur at your status meetings on a regular basis. Get team buy in and ideas for what the top three goals for each week should be, and then see if the resources assigned to complete those goals need assistance with other activities that will allow them to succeed in completing those team goals for the week.

These ideas are low cost and easy to implement. You have to be willing to try new things to keep your team energized!

Coming to a conference center near you.....



PMI Eastern Iowa

Thursday, September 29, 2011

7:30 a.m. – 5:00 p.m.

4th Annual Professional Development Day (PDD) Harvesting Your Leadership Skills

Benefits to attending the PDD

- Earn **8** professional development units (PDUs) – 3 more than in 2010 but for the same price!
- Hear two nationally-recognized speakers and leaders in project management. See the speaker information on Page 6.
- Network with colleagues.
- Win prizes from our PDD sponsors and vendors.

Registration begins July 1, 2011

- Early-bird rates valid until August 31, 2011
 - Eastern Iowa Chapter Member: \$199
 - Non-chapter member/guest: \$229
- Regular registration rates, beginning September 1, 2011
 - Eastern Iowa Chapter Member: \$229
 - Non-chapter member/guest: \$259



Register online at

www.pmieasterniowa.org

Location

The Kirkwood Center
7725 Kirkwood Blvd. SW
Cedar Rapids, IA 52404

www.thehotelatkirkwood.com

Find out more at www.pmieasterniowa.org

Andy Kauffman

Andy is an international speaker, author, UWP Trainer, and executive coach, and President of the Institute for Leadership Excellence & Development Inc. Andy brings a rich background of over 25 years of



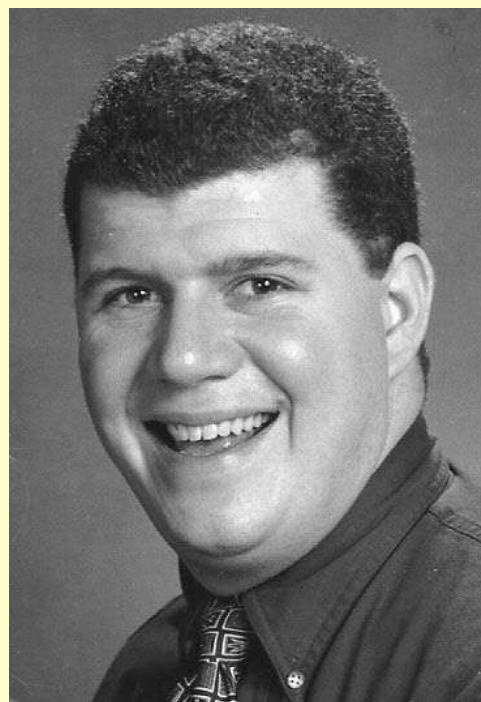
experience in executive management, technology, team leadership, project management, consulting, and coaching. His focus is all about transforming organizations through proven, holistic, real-world approaches. He is a certified Project Management Professional (PMP®) and a member of the Project Management Institute (PMI®).

Before founding the Institute, Andy was the Vice President of U.S. Systems for ACNielsen. He was responsible for running the Decision

Support segment of ACNielsen's business. His teams were responsible for designing, developing, and implementing sophisticated market research systems for the company's clients around the world. Prior to ACNielsen, Andy was the Director of Development at CC Information Services, Inc. and Manager of Product Development at Baxter.

Rick Morris

Rick is an ITIL Practitioner, consultant, author, mentor, and creator of a foundation to promote Project Management in charities and other non-profits. Rick holds the PMP, MPM, OPM3, Six Sigma Green Belt, MCITP, MCTS, TQM, ATM-S, ITIL, and ISO certifications. He is the President of R² Consulting LLC., and has worked for world class organizations such as GE, Xerox, and CA. At an early age, Rick worked center stage for Walt Disney World in their seasonal shows, and for MGM Studios in the New Mickey Mouse Club. Taking the experience of his youth and blending it with the knowledge he attained throughout his career, Rick has inspired and mentored thousands of project managers across the world.



Sponsorship Opportunities Available for the PMI Eastern Iowa Professional Development Day (PDD)

Suzanne Prymek, PMP

We are very excited to have two exceptional speakers for the PMI Eastern Iowa Chapter's fourth annual PDD. As noted on page 5 of this newsletter, this year's theme is "Harvesting Your Leadership Skills."

Check out the sponsorship information on our new and improved chapter website (www.pmieasterniowa.org). Here you will find details on the various sponsorship levels that are available and the benefits associated with each level. Click **Get Involved > Sponsorship > Advertising Guidelines** to access this information. You can also view a list of our current sponsors by clicking **Get Involved > Sponsorship > Active Sponsors**. The PDD is our chapter's largest professional development event of the year. PDD attendance has averaged over 100 project management professionals from the Cedar Rapids/Iowa City corridor. PDD sponsorship is a great way for your organization to market your products or services to area project managers.

If your organization is interested in learning more about sponsorship opportunities, please contact Sue Prymek, VP of Outreach (outreach@pmieasterniowa.org) with a contact name and number. We are eager to share information about our chapter, the PDD, and sponsorship opportunities with you. We have an exciting program lined up this year and look forward to hosting this annual local event where members and project management professionals can learn and network.



PMI Knowledge Center

Carol Scherrman, VP of Operations

If you are a Project Management Institute (PMI) member, have you checked out all the great resources that are available in the Knowledge Center?

The Knowledge Center provides:

- Links to all PMI publications
- Research information
- Links to surveys
- A virtual library

Of particular interest is the eReads & Reference tool in the virtual library. An exclusive PMI member benefit, eReads & Reference provides online access to 250 complete and unabridged books from PMI and other leading publishers. Topics include project management, leadership, teams, cross-cultural business, knowledge management and more. eReads & Reference is powered by Books24x7, a powerful search engine that lets you find books by keyword, phrase, title, author, publisher, or International Standard Book Number (ISBN). Members can use eReads & Reference as an on-the-job guide, a research and study aid, or to preview books before you buy. For quick reference, bookmark titles of interest or build your own bookshelf. To access the PMI Knowledge Center and eReads & Reference:

1. Go to www.pmi.org.
2. Login using your PMI member credentials.
3. Click the **Knowledge Center** tab at the top left of the homepage.
4. Click the **eReads & Reference** link.
5. Review the **Browse Topics** section on the right side of the homepage to learn what books and topics are available.

DATES TO REMEMBER

JULY 2011						
S	M	T	W	T	F	S
					1	2
3	4	5	6	7	8	9
10	11	12	13	14	15	16
17	18	19	20	21	22	23
24	25	26	27	28	29	30
31						

4 – USA Independence Day
14 – PMI Eastern Iowa Chapter Meeting

AUGUST 2011						
S	M	T	W	T	F	S
	1	2	3	4	5	6
7	8	9	10	11	12	13
14	15	16	17	18	19	20
21	22	23	24	25	26	27
28	29	30	31			

11 – PMI Eastern Iowa Chapter Meeting

SEPTEMBER 2011						
S	M	T	W	T	F	S
				1	2	3
4	5	6	7	8	9	10
11	12	13	14	15	16	17
18	19	20	21	22	23	24
25	26	27	28	29	30	

5 – Labor Day
15 – PMI Eastern Iowa **Evening** Chapter Meeting (see following page)
23 – Fall/Autumn begins
29 – Chapter PDD

September Evening Chapter Meeting to be sponsored by



Global Tech Services, established in 1999, has corporate offices in West Des Moines, Iowa. We offer a variety of opportunities in Iowa and throughout the US Market. Our strategic corporate business plan is designed to enhance and streamline project completion deadlines, budgets, productivity, and emerging trends in the market. Whether your need is contract, contract to hire, or permanent placement recruiting, we understand that our client's competitive advantage is people. Throughout the years at GTS, we have implemented and rotated our infrastructure to coordinate with the highly prominent direction of customer expectations and desires. We are proud to practice "customer first~quality always."

GTS areas of expertise range from specialized strategy and process reengineering offerings to technology related services. Our wide breadth of IT capabilities allows our clients to receive maximum ROI on corporate projects. We provide service offerings in contract, contract-to-hire and direct hire which include the following:

- Project, Portfolio, & Program Management
- Business & System Analysis
- Business Process
- Improvement/Reengineering
- Software and Application Development (i.e. Java,.Net)
- Database Administration
- IT Security
- Quality Assurance (i.e. Tester, Analyst, Senior Analyst, and Lead)
- Reporting Services (i.e. Crystal, SQL, Business Objects)
- Enterprise Resource Planning (i.e. Peoplesoft, Oracle, SAP)
- Data Analyst / Data Warehouse
- Tech Lead / Team Lead
- Network and System Administrators
- Architects (i.e. Java, Net, Data)

5058 Grand Ridge Drive
West Des Moines, IA 50265
Tel:515-267-9097
Fax:515-225-0308

<http://www.globaltechservices.com>

"Certified Woman Owned and Operated Consulting Business"

Chapter WHO's Who?	
Role	Name
President	Tammy Sweat, MSPM, PMP®
VP of Communications and Publicity	Behram Kasad, MBA
VP of Education	Srikanth C Kamineni PMP®
VP of Finance	Brian Thorn, PMP®
VP of Operations	Carol Scherrman, PMP®
VP of Outreach	Suzanne Prymek, PMP®
Past President	Bhaskar Pulikal, MBA, CISA, PMP®
Director of Certifications	Denise Boeding, PMP®
Director of Individual Outreach	Mary Phelan, PMP®
Director of University Outreach	Bob Sanders, PMP®
Director of Logistics	Brian Wayling
Director of Marketing	Jennifer James, PMP®
Director of Member Relations	Geri Stivers, PMP®
Director of Newsletter	Sathian Devarajan, MBA, PMP®
Director of Professional Development	Jacquie Haltmeyer, PMP®
Director of Programs	Travis Zweibohmer, PMP®
Director of Website and Technology	Mark Bazzell, MBA, PMP®