



Building professionalism in project management.™

Project Management Institute
Eastern Iowa Chapter

100's NUGGET

2010 Issue 10

October 2010

P.O. Box 1811
Cedar Rapids, IA 52406-1811

<http://www.pmieasterniowa.org>
communications@pmieasterniowa.org

October



**Green turns to
Gold**

Inside this issue:

Presidents Corner	2
2011 Election Results	3
Scholarship Winner	6
Fun Night Recap	7
PDD Information	10
PDD Sponsors	11

Learn from yesterday, live for today,
hope for tomorrow. The important
thing is not to stop questioning.

Albert Einstein

Our Next Chapter Meeting - October 12, 2010

The next PMI breakfast meeting will be held on **Tuesday, October 12th, 2010 from 7:15 a.m. to 9:00 a.m. at the Clarion Hotels and Convention Center, 525, 33rd Avenue, Cedar Rapids SW.** The Clarion Hotel and Convention Center phone number is **(319) 366-8671**.

PROGRAM: "Tips to Motivating Individuals -- On and Off Site" presented by Beth Anne Tingley-Pigge

ABOUT THE PROGRAM:

Motivating people impacts you whether you are a manager or not! My career has been divided between being a people manager and a matrix motivator. I only became convinced about the power of feedback a few years ago. A feedback based improvement plan increased compliance on the accuracy and timely delivery of artifacts -- from 13% to 77% and from 69% to 93% compliance! We also sustained that improvement.

ABOUT THE SPEAKER:

Beth Anne Tingley-Pigge was raised in the Detroit Michigan area during the 70s. She attended The College of Wooster in Wooster, Ohio and received a Bachelor's degree. After about five years of being a head hunter for physicians, she attended University of Michigan's School of Public Health and received her Master's Degree (Masters of Health Services Administration). Simultaneously, she worked at a large hospital system in the Detroit area in their Medical Staff office -- overseeing physician recruitment and managing physician practice acquisitions. Upon relocation to the St. Louis area, Beth Anne did a short one year tenure at a consulting firm. It was in 1998 that Cigna Healthcare hired her to lead the Provider Contracting Department for the St. Louis Healthplan. After two years with the St. Louis Healthplan, Beth Anne accepted a Project Team role for the corporate offices in Hartford, CT. While she has enjoyed several roles at Cigna over the last 12 years, she is currently a Director in IT in the area of Release Management. Beth Anne is a certified Six Sigma Black Belt and sits on the IT counsel at Cigna for Six Sigma. As of June, 2010, she is a certified PMP. She is a Performance Catalyst enthusiast.

Beth Anne lives with her family; husband of 20 years and three cool kids - ages 14-7.

Cost: Chapter Members, \$10; Guests, \$15

RSVP: Please confirm no later than **Thursday, October 7th**, to programregistration@pmieasterniowa.org; use **OCTOBER REGISTRATION** in the subject line. Cancellations must be received by COB, Friday, October 8th to avoid being charged as a no-show for this chapter event.

Program Schedule:

7:15 - 7:30	Registration, breakfast, and networking
7:30 - 7:40	Ice Breaker
7:40 - 7:50	Opening by Chapter President / Chapter Officers
7:50 - 8:40	Presentation / Discussion
8:40 - 9:00	Final announcements and wrap-up

Buffet Breakfast Menu (subject to change):

French toast w/ maple syrup and whipped butter / Golden scrambled eggs w/ Cheddar cheese/ Fresh fruit / Regular / Decaf Coffee/ Hot Tea



Trick AND Treat

In the very near future little children dressed as wizards, princesses, ninjas and a variety of other outfits will pound the pavements as they tread up and down sidewalks armed with their fake swords, tiaras and pillow cases or plastic bags or pumpkin shaped buckets, or pretty much anything to collect their share of Halloween candy. While the original meaning of trick or treat and Halloween may have been lost in the endless commercialization of the season, it is nice to see kids in their own element having fun.

On a similar note, but with perhaps slightly less hype than Halloween, we hope you had a good time at our last Chapter meeting in September, 2010, especially since it was the 'Fun Night'. The bad news was that the turnout was much lower than expected. The good news, however, most of those who attended this event ended up in going home with at least one prize. Admittedly there were no on stage karaoke auditions or comedy acts, but nevertheless a good time was had by all.

As previously published, we also had elections and announced the new Board for 2011. More details on this can be found later in this newsletter. No Fun Night could be complete without a lively and hilarious session on "Project Management and Marriage" from our own Chapter Member Mark Latta. While not quite conforming to the "normal" PMI themes for Chapter meetings, the event was, wait for it - worth one full PDU.

Behind the scenes, the Board has been working hard to make every member's experience of using the chapter resources easy and more user friendly. Towards this end, we have been evaluating a number of tools available to us. Automated registration, messaging and broadcasts, a user friendly interface to pick up PDUs are just some of the things we are looking to provide our members. You should hear and see the result of these efforts in the next couple of months as we make our choice of the tool(s) that give us the most features and functionality for our needs.

Did you know that our Chapter is also active on the social networking aspect? The Chapter has set up accounts both on Linked in and Twitter. It is very encouraging to see that we have almost 200 of our members connected on Linked in. Over the last year the site has picked up activity with folks opening up discussion threads. There is no doubt that this has great potential to serve as a forum for our members to interact and network even outside our Chapter meetings. If you are not a member of our site in Linked in, please join the group and participate in discussions. Who knows the next Project management paradigm may come out of the Eastern Iowa Chapter. Go ahead and make a Tweet! Not only do these social networking tools allow for, well social networking, but they also serve as a good platform for making quick and brief communications in addition to our emails.

While we see all signs of Fall all around us, it is not yet autumn for the current Board. In fact, Spring has just arrived with our milestone event of the year the Eastern Iowa 'Professional Development Day' slated for October, 21st. Remember this will be our 3rd PDD. It is encouraging to see a number of members have already registered for this signature chapter event. If you haven't registered yet, please do it soon. There has also been a good surge in the number of sponsors being associated with this event this year, which goes to show that area corporations see immense value in having a well trained and professional pool of talent to choose from. We hope you make use of the opportunity and plan to attend the event – if not to learn, to network. Although we prefer that you do both.

October is usually associated with having to make the difficult choice between - a trick or treat. But with a panel of eminent speakers lined up and culinary support from the new Kirkwood Hotel, you can expect to enjoy both without having to choose one.

No swords or pillow case required!



Bhaskar Pulikal, President

2011 BOD Elections Results

(Held on 09/14/2010)



President - Tammy Sweat, MSPM, PMP®

Tammy received her BA in Computer Science from the University of Iowa, a Master of Science degree in Project Management from the University of Wisconsin in 2006, her PMP® certification in 2001 and an ITIL foundation certificate in 2007. Tammy has been a PMI and Eastern Iowa Chapter member since 2001. She has served two years as VP of Communications and Publicity. She also served as the Director of Programs in 2007 and the Director of Newsletter in 2008 and 2009. Tammy also serves on the University of Iowa Parent's Board.

Vice President –Operations, Carol Sherrman, PMP®

Carol received her bachelor's degree in finance from the University of Texas at Arlington and her master's degree in business administration from the University of Dubuque. Carol received her Project Management Professional (PMP) certification in March 2009.

Carol has been a PMI and Eastern Iowa Chapter member since 2009. Carol previously served as the chapter's Director of Professional Development, and is the current VP of Operations.



Vice President - Outreach, Suzanne Prymek, PMP®

Suzanne received her Bachelor's of Science in Business from Mount Mercy College in 2006 and her PMP® from the Project Management Institute (PMI) in August of 2005 and a Yellow Belt in Six Sigma from the University of Wisconsin in October 2007.

Suzanne has been a PMI and Eastern Iowa Chapter member since 2002. She has served as VP of Education for the past 2 years. She also served as the Director of Programs in 2008.

Vice President – Education, Srikanth Kamineni, BSc, MSc

Srikanth completed his Master's in Computer Science at Maharishi University of Management, Fairfield, Iowa and Bachelor's in Electrical and Electronics Engineering at Sri Venkateswara University, India.

Srikanth is the current Director of Programs.



Vice President – Finance, Brian Thorn, PMP®

Brian received his Industrial Engineering Degree and MBA from University of Iowa and his PMP® from the Project Management Institute (PMI) in 2005.

Brian has been a PMI and Eastern Iowa Chapter member since 2005. Brian is the current VP of Finance.

VP Communications and Publicity – Behram Kasad, BEng (Hons), MBA

Behram received his Bachelor's of Engineering from Nottingham Trent University in England, and his MBA in Innovation, Strategy, Information and Technology from Theseus-Edhec in France. He has been a PMI and Eastern Iowa Chapter member since 2005.

In 2010, Behram served as the Director of Newsletter. He also serves on the Board of Directors for another local nonprofit organization, the Professional and Technical Diversity Network (PTDN).



ANNOUNCEMENTS

Mary Phelan – New Director of Individual Outreach **Suzanne Prymek, PMP®**

Chapter members please welcome Mary Phelan as our new Director of Individual Outreach for the PMI Eastern Iowa Chapter effective immediately.

Mary Phelan has over 25 years of experience in the semiconductor, transportation, and aerospace industries. She received her Bachelor's degree in Accounting at Washington State University and her Masters in Business Administration from Golden Gate University in San Francisco.

Mary is currently Director of Operations Finance at Rockwell Collins. Prior to joining Rockwell, Mary managed financial projects in the transportation industry and received her PMP in 2006. Mary was formerly a member of the Puget Sound PMI Chapter in Seattle, WA and has been a member of the Eastern Iowa Chapter since 2007.

Thank you Mary for volunteering! Congratulations Mary!!



Meet Denise Boeding – New Director of Programs **Suzanne Prymek, PMP®**

Chapter members please welcome Denise Boeding as our new Director of Certifications for the PMI Eastern Iowa Chapter effective immediately.

Denise has over 17 years experience in program management, project management, customer relationship management, marketing, contract negotiation, and process improvement. Denise is currently a Senior IT Project Manager at Rockwell Collins in the Program Management Office and has been employed there since 2007. Prior to that, Denise was employed at Pearson. She worked for 8 years in the Pearson Educational Measurement division as Senior Project Manager and Business Manager managing large scale state assessments and a start-up product line and for 5 years in the Pearson Government Solutions division as Program Manager where she managed 3 programs in the higher education industry.

Denise received her Bachelor of Science Degree in Business Administration from the University of Wisconsin-La Crosse. She is currently pursuing an MBA degree at Mount Mercy University in Cedar Rapids. She obtained her PMP from the Project Management Institute (PMI) in February 2009 and has been a member of the Eastern Iowa Chapter of PMI since 2001.

Denise replaces Carol Meeks. We want to thank Carol for all her efforts while holding this position. Carol has been an invaluable contributor to the Board and to the chapter members and we will greatly miss her!

Thank you Denise for volunteering! Congratulations Denise!!

2011 Chapter Meetings – New Meeting Day! **Suzanne Prymek, PMP®**

Please mark your calendars now for a change in meeting days starting in February 2011. Based on your feedback, many people indicated that a Thursday chapter breakfast meeting would create opportunities for those members that have not been able to attend meetings due to work schedule conflicts.

We will switch to the second Thursday of the month. Our meeting location will remain unchanged and we continue hosting the meetings at the Clarion Conference Center on 33rd Avenue in Cedar Rapids. The time will also remain unchanged. We hope that this change will allow more members to participate and attend in the chapter meetings.

As with any change, we know this could cause potential conflicts for other members. We hope that this will be a positive change for the majority of our members. Always, your thoughts are important to us on how we are doing, so please feel free to contact any of the PMI Eastern Iowa leadership. Email contact information is located on the last page of each monthly newsletter.

News you can use

BEHIND THE SCENES

During the month of September, the Leadership team:

- held BOD elections for 2011
- contacted and secured sponsors for the PDD
- continued to work with new volunteers to place them on the team
- held the monthly meeting for the BOD
- explored other technology solutions in light of continuing outages with the current service provider
- continued work on the PDD including selecting the menu and creating the brochure
- attended the Region 2 Strategic Advisory Group meeting and Leadership Conference


DIRECTOR OF UNIVERSITY OUTREACH—VOLUNTEER OPPORTUNITIES

Behram Kasad

The Chapter continues to seek out a highly motivated member to fill an opening for the above listed Director position. The Director of University Outreach serves as a liaison between the Board of Directors and targeted universities or colleges identified as having a project management curriculum relating to project management.

If interested in this position, please contact the Director of Volunteers at volunteers@pmiasterniowa.org.

Chapter Meetings Schedule (subject to change)



Date and Time	Location	Topic and Presenter
October 12, 2010	Clarion Hotel & Convention Center, 525 33rd Ave SW, Cedar Rapids	"Tips to Motivating Individuals -- On and Off Site" presented by Beth Anne Tingley-Pigge
November 9, 2010	Clarion Hotel & Convention Center, 525 33rd Ave SW, Cedar Rapids	"Earned Value Management System (EVMS) How Can It Help You On Your Projects?" presented by Sung S. Stultz
December 14, 2010	No meeting	

MEMBERSHIP UPDATE

Don't forget you can renew your PMI Membership online at www.pmi.org.

The PMI Eastern Iowa Chapter membership currently stands at **310**, with **168 PMP®s**, 5 new members, and 11 renewals.

PMI Chapter Transfers

If you have a need to transfer chapters because you have moved or relocated due to employment location changes, be sure to update your membership data at the PMI global website, www.pmi.org.



Eastern Iowa PMI Scholarship Winner

DAKOTA PRYMEK

Dakota Prymek graduated from Clear Creek Amana in May 2010. He graduated in the top ten percent of his class, maintaining honor roll status since Grade 4 for each semester. His concentration of studies were Math and Engineering courses. Dakota was involved in Band, Football and Wrestling. Dakota received All State District 3 A placement for football in his Junior and Senior year, along with an Academic Letter for football. In Wrestling, he received a varsity letter all four years for the heavyweight division. Dakota was Co-Captain of the Wrestling and the Football teams.

Dakota was a mentor to underclassmen, a blood donor, and participated in a variety of volunteer activities during his high school career. Dakota earned the Eagle Scout rank in Boy Scouts in June 2008 by completing a community service project which involved grant writing, project planning and scope management. He also received the Boy Scout Order of the Arrow award in 2003.

Other community service work completed during Boy Scouts included the annual road clean ups, Scouting for Food, church dinners, car washes, park improvements, assisting the elderly and helping other scouts with their Eagle Scout projects. Dakota attended the 2005 National Boy Scout Jamboree.

In 2004 Dakota was awarded the Iowa Governor's Institute Award for Leadership. This scholarship program was conducted at the University of Iowa and included leadership and volunteer community service projects such as visiting the elderly at nursing homes, and cleaning up a portion of City Park in Iowa City.

Dakota is attending Coe College in Cedar Rapids, Iowa, where he planned a concentration of studies in Business and Mathematics. He is a member of the football team, responsible for all game day films. Tau Kappa Epsilon is inviting Dakota to become a future member of that fraternity. Dakota is a life long Eastern Iowa resident. He is the son of Smoe and Sue Prymek of Oxford, Iowa.



Dakota was selected by the PMI Educational Foundation, not by the Eastern Iowa Chapter Leadership, and is the first recipient of the PMI Eastern Iowa Chapter Scholarship instituted in 2010.

~~~ CONGRATULATIONS DAKOTA ~~~

#### Criteria for application (which were due by June 1, 2010):

**In order to be considered eligible for a scholarship, applicants must be enrolled in or applying for an accredited academic degree program in project management or a related field benefiting from project management with the following order of priority:**

- 1.A child (or a step child) of a member of the PMI Eastern Iowa Chapter
- 2.A resident of the Iowa City/Cedar Rapids or Eastern Iowa area attending or planning to attend any accredited college or university
- 3.A resident of Iowa attending or planning to attend any accredited college or university
- 4.An individual attending or planning to attend an accredited degree program at a college or university in the tri-state area (Iowa, Missouri, Illinois) or
- 5.Any individual attending or planning to attend an accredited degree program at any college or university.

## September PMI Eastern Iowa 2010 Fun Night Recap

Suzanne Prymek, PMP

Special thanks goes out to Mark Latta, our speaker that the annual PMI Eastern Iowa Fun night event, that was hosted by the Board of Directors on September 14<sup>th</sup>. Mark provided us with a humorous presentation entitled "Project Management and Marriage".

What would PMI Fun Night be without prizes? There was a question and answer session about our chapter and PMI prior to Mark's presentation. There were a number of winners for this ice breaker that received coupons for Synergy Restaurant and passes for Penguins Comedy Club. Glenda Dixon received free admission for two to a Sunday brunch at Synergy for being the PMP present that has held the certification the longest. Glenda received her PMP in 1998!

Additionally \$25 dollar gift cards were awarded as well. The Board also provided certificates for free admission to a future breakfast meeting and the winners of those certificates included Carol Scherrman, Ray Kratsville, Jamie Northrup, Mark Latta and Jacquie Haltmeyer.

The Grand Prize Winner was Mary Phelan. Mary receives a free admission to the 2010 PMI Eastern Iowa Professional Development event scheduled for October 21<sup>st</sup>. Congratulations to all our winners, and thank you for attending the Eastern Iowa PMI Fun Night event!



Chapter members listening to Mark Latta' interpretation of "Project Management and Marriage" at the Chapter Fun Night (Sept 14, 2010)

## You've Got It – Now Don't Lose It! Carol Meeks PMP®

*This article is the fifth in a series to review each category of Professional Development Units (PDUs) available to maintain your PMP credential. To learn more about maintaining your credential, go to the Career Development section of PMI.org where you'll find FAQs, a video and much more!*

### Category 4: Courses Offered by Other Education Provider

Contact hours of project and/or program management education may be earned by attending relevant educational courses offered by organizations not registered with PMI.

Very similar to Category 3 (PMI Registered Education Providers/PMI Components) PDU opportunities except that these are offered by non-R.E.P. providers. Because PMI has already evaluated and endorsed R.E.P.s your best bet is to look to these folks for course work first. PMI recognizes that there are other valuable opportunities and Category 4 is likely where they would fall.  
(continued on page 7)

(continued from Page 6)

## Examples/Resources:

- Take a web-based real-time course on performing qualitative risk analysis as part of project management
- Learn more about project quality control in a traditional classroom setting in Eastern Iowa
- Video Conference a managing stakeholder expectations workshop with a company half way around the world
- Work towards a Project Management certificate or degree by taking courses with a college or university

To learn more about PMI's **Continuing Certification Requirements (CCR) Program**, please refer to the PMP Handbook.

And be sure to **login to the CCRS** at [www.pmi.org](http://www.pmi.org) to view your personal transcript, submit activities, find providers, and learn more about PDUs.

The possibilities are really endless!

## Calculating PDUs:

- One contact hour of learning relevant to project management within a structured activity or course equals one PDU.
- If only a portion of the course focuses on project management, you can report a fraction of the PDUs for the percentage of the course (e.g. 15 minutes focused on project management equals 0.25 PDUs).

## Logistics:

- There is no maximum number of PDUs for this category
- Documentation required upon PMI audit/request includes: registration form, certificate or letter of attendance, AND a brochure or course materials outlining the subject matter covered and the qualifications of the instructor/lecturer.

**What do you think?** If you have any recommendations or additional resources, please share your thoughts. Thanks!

## Priority Management Training Schedule (subject to change)

The following Priority Management sponsored professional development opportunities are available.

Visit [www.prioritymanagement.com/rsmith/workshop\\_schedule/](http://www.prioritymanagement.com/rsmith/workshop_schedule/) or send questions to [rsmith@prioritymanagement.com](mailto:rsmith@prioritymanagement.com).

| Date                     | Course ID     | PDUs | Location                  | Title                                |
|--------------------------|---------------|------|---------------------------|--------------------------------------|
| Nov 2 & 9                | 1161-TN060100 | 7    | Web workshop at your desk | Working Smart with Microsoft Outlook |
| Dec 8 & 15               | 1161-TN060100 | 7    | Web workshop at your desk | Working Smart with Microsoft Outlook |
| 2011 dates to be advised |               |      |                           |                                      |

## New Horizons Training Schedule (subject to change)

The following courses are available at New Horizons of Cedar Rapids in the coming months.

Visit [www.newhorizonscr.com](http://www.newhorizonscr.com), email [events.cedarrapids@newhorizons.com](mailto:events.cedarrapids@newhorizons.com), or call 319-294-9035.

| Date                     | PDUs | Location     | Title                              |
|--------------------------|------|--------------|------------------------------------|
| Oct 6                    | 21   | New Horizons | Introduction to Project Management |
| Dec 6                    | 21   | New Horizons | PMP Exam Prep                      |
| 2011 dates to be advised |      |              |                                    |



## Claiming PDUs in 2010

by Jacquie Haltmeyer, Director of Professional Development

As you might have noticed, the Project Management Institute (PMI) recently launched a new look for the PMI Web site. This is a good time to remind everyone how to access the Continuing Certification Requirements (CCR) System and report professional development units (PDUs). The CCR System updates that were implemented in 2009 simplified the process for reporting PDUs, particularly for 1-2 PDU events. Activity numbers are no longer assigned for 1-2 PDU events.

### To report PDUs for chapter meetings:

Log in to [www.pmi.org](http://www.pmi.org) using your PMI username and password (If you are a new user, click the link to establish an account)

Click the link to **View PDUs** (this should display on your home page under My Certification Status)

Click **Report professional development units (PDUs)**

In Step 1 in the PDU Category field, select **Cat 3: Registered Education Provider program/PMI Component Event**

Under Activity type, select **Report a Component 1-2 PDU Event**

Click **Next**

In Step 2 in the Component ID field, enter **C100**, then click **Search**

In Step 3, click the link under the **Component ID** column

In Step 4, complete the following activity information, then click **Next**. (Note: only fields marked with an asterisk are required.)

Activity date completed: Enter the date the chapter meeting was held

Activity title: Enter "Month Year Chapter Meeting" (example, October 2010 Chapter Meeting)

Activity meeting number, contact person, phone number, and e-mail address can be left blank

In Step 5, enter PDUs claimed, then click **Next**

Chapter meetings are worth 1 PDU

In Step 6, click the confirmation statement check box then click **Submit**

### To report PDUs for the Professional Development Day (PDD):

Follow steps 1-4 above

In Step 1 under Activity type, select **Find an Activity (Course or Event)**, then click **Next**

In Step 2 in the Provider number field, enter **C100**

In the Activity number field, enter **21102010-01**

Click **Search**

In Step 3, click the link under Activity #

Enter the activity start and end date (October 21, 2010)

Answer the evaluation questions, then click **Next**

In Step 4, confirm the number of PDUs claimed, then click **Next**

If you attended the PDD for the whole day, you earned 5 PDUs

In Step 5, click the confirmation statement then click **Submit**

You will receive a confirmation e-mail when your PDUs are accepted. You might want to keep a copy of the e-mail as a record of your PDUs.

### Tips:

If you leave the Activity number field blank, the system will display all activities for the provider.

The search results can be sorted in ascending or descending order by clicking on the Activity # or Activity Name column heading.

If you earn PDUs through another provider, ask for the correct provider number and activity number.

Registered education providers are responsible for submitting activities to PMI so they can be entered in the CCR System.

If you have questions, e-mail [professional@pmieasterniowa.org](mailto:professional@pmieasterniowa.org).

## PMI - Eastern Iowa Chapter Contacts

### 2010 Board of Directors

|                                    |                      |                                   |
|------------------------------------|----------------------|-----------------------------------|
| President                          | Bhaskar Pulikal, PMP | president@pmieasterniowa.org      |
| VP of Communications and Publicity | Tammy Sweat, PMP     | communications@pmieasterniowa.org |
| VP of Education                    | Suzanne Prymek, PMP  | education@pmieasterniowa.org      |
| VP of Finance                      | Brian Thorn, PMP     | financial@pmieasterniowa.org      |
| VP of Operations                   | Carol Scherrman, PMP | operations@pmieasterniowa.org     |
| VP of Outreach                     | <b>Open</b>          | outreach@pmieasterniowa.org       |
| Past President                     | Paddy Puthige, PMP   | pastpresident@pmieasterniowa.org  |

### 2010 Directors

|                                      |                     |                                  |
|--------------------------------------|---------------------|----------------------------------|
| Director At-Large                    | Thom Lusardi, PMP   | atlarge@pmieasterniowa.org       |
| Director of Certifications           | Denise Boeding, PMP | certification@pmieasterniowa.org |
| Director of Corporate Outreach       | Steve Sawyer, PMP   | corpoutreach@pmieasterniowa.org  |
| Director of Individual Outreach      | Mary Phelan, PMP    | indoutreach@pmieasterniowa.org   |
| Director of University Outreach      | <b>Open</b>         | unioutreach@pmieasterniowa.org   |
| Director of Logistics                | Brian Wayling       | logistics@pmieasterniowa.org     |
| Director of Marketing                | Jennifer James, PMP | marketing@pmieasterniowa.org     |
| Director of Member Relations         | Geri Stivers, PMP   | membership@pmieasterniowa.org    |
| Director of Newsletter               | Behram Kasad        | newsletter@pmieasterniowa.org    |
| Director of Professional Development | Jacque Haltmeyer    | professional@pmieasterniowa.org  |
| Director of Programs                 | Srikanth Kamineni   | programs@pmieasterniowa.org      |
| Director of Technology               | Milind Shalia       | technology@pmieasterniowa.org    |
| Director of Volunteers               | Nita Inani, PMP     | volunteers@pmieasterniowa.org    |
| Director of Website                  | Mark Bazzell, PMP   | website@pmieasterniowa.org       |

### Other Contacts

|                                      |                       |                                        |
|--------------------------------------|-----------------------|----------------------------------------|
| Chapter Monthly Program Registration | Program Registration  | programregistration@pmieasterniowa.org |
| Chapter Training Registration        | Training Registration | Online registration.                   |
| Chapter Website Administrator        | Webmaster             | Contact Director of Website.           |



— Registration is now open —



**PMI Eastern Iowa**

**October 21, 2010**

## 3rd Annual Professional Development Day

### EXPLORING OPPORTUNITIES

Kirkwood Center For Continuing Education  
7725 Kirkwood Blvd. SW  
Cedar Rapids, IA 52404  
<http://www.kirkwood.edu/maincampus>

Registration begins July 1, 2010.

Early Bird Special until September 30, 2010

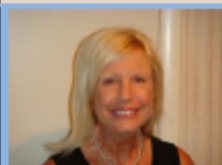
\$199 per PMI Member/ \$229 per non PMI Member

After September 30, 2010

\$229 per PMI Member/ \$259 per non PMI Member

Register online:

<https://www.123signup.com/register?id=mckpr>



**Keynote:**

**Dr. Ginger Levin, PMP, PgMP**

"Successful Virtual Teams for Project Management Excellence"

#### Track 1

#### Track 2



**Doug Williams, PMP**

"Using Deliberate Project Communications Management"



**Gayle Mote**

"Building the Emotional Intelligence of Your Project Team"



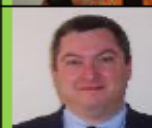
**Closing:**

**Tim Kasse**

"Utilize Multiple Models and Standards to Enhance Your Project Management Knowledge and Skills"

**Dr. Ginger Levin, PMP, PgMP**  
"Embracing Change in Project Management and in Your Career"

**David Wanetick**  
"Initiating a Devil's Advocate Program"



For more details visit  
<http://www.pmieasterniowa.org>

## PDD Sponsors

**Gold  
Sponsor**



**UNIVERSITY OF WISCONSIN  
PLATTEVILLE  
ONLINE**

### University of Wisconsin-Platteville Online Master of Science in Project Management

Gain a competitive edge and accomplish your educational goals by earning an online **Master of Science in Project Management (MSPM)** from the **University of Wisconsin-Platteville**.

- Register now for Spring 2011 courses.
- Platteville's MSPM is one of only a few programs that is Globally Accredited by PMI®. Each 3-credit course equals 45 PDUs.
- UW-Platteville will offer another Project Management Conference. Watch the website for more information about this July 2011 event.
- PMI awarded Laura Sherrick, a MSPM graduate, the "James R. Snyder International Student Paper of the Year." This is the second time in the last three years that a UW-Platteville student won the award.
- UW-Platteville was selected a top-three finalist by readers of *Corporate Report Wisconsin* magazine in the category of Best School for Online Education.
- GetEducated.com's national editorial review team ranked the MSPM a "Best Buy," indicating that the program offers a high quality degree at a cost well below the national average.
- With more than 30 years distance education experience, UW-Platteville Distance Education was praised as a "Model for the Nation" by the Higher Learning Commission.

#### Request Information Today!

[DistanceEd@uwplatt.edu](mailto:DistanceEd@uwplatt.edu)

800.362.5460 or 608.342.1468

[www.uwplatt.edu/disted](http://www.uwplatt.edu/disted)

## Silver Sponsors



Microsoft Project Certification is specifically designed to help project managers apply and fully benefit from the leading standard in project management best practices and methodologies as established by PMI. Learn more about Microsoft Project 2010 and certification at <http://www.microsoft.com/project/en/us/default.aspx>



Pearson is an international media company with world-leading businesses in education, business information and consumer publishing.

For more information, go to [www.pearson.com](http://www.pearson.com)



St. Ambrose University is partnering with The Lewis Institute to provide several Project Management training programs and a Professional Certificate in Project Management track in the Quad Cities.

For more information, go to [http://web.sau.edu/cps/pd/current\\_public\\_offerings.html#LewisIns](http://web.sau.edu/cps/pd/current_public_offerings.html#LewisIns)



The University of Iowa MBA for Professionals and Managers (MBA-PM) is a nationally ranked, part time program, delivered in Cedar Rapids. It is designed for busy, working professionals who want a quality degree with classes that fit their schedule. Students set their own time frame; some complete the degree in just under two years, while others take up to 10. The cost is competitively priced for the market and considering that it's the only ranked and accredited program in the area, it's a true bargain. Qualified students can start next semester through our PreMBA status.

For more information or to sign up for an information session, visit our website [www.tippie.uiowa.edu/mbapm](http://www.tippie.uiowa.edu/mbapm) or call 1-800-MBA IOWA.

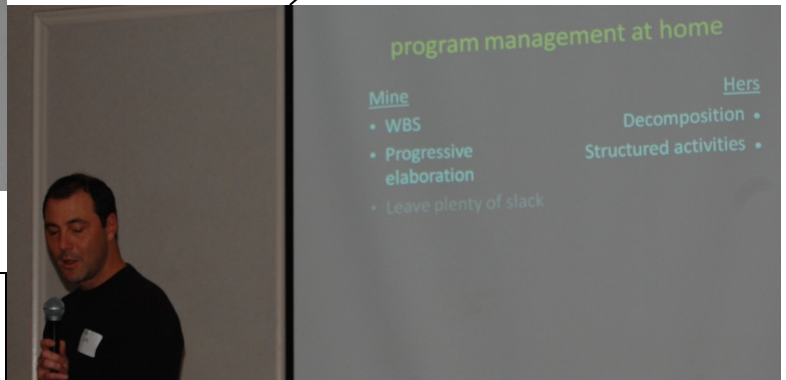


How to Baseline your Marriage according to Mark Latta!



## FUN NIGHT

Mark Latta driving home the similarities between Project Management and Marriage (Left and Below)



Past President Paddy Puthige announcing the new 2011 BOD.



Dir. Of Education Suzanne Prymek announcing the door prizes



Cathy Radzewich was spellbound after winning her Red Lobster gift card!

Decisions decisions? Terry Knacht debating Burger or Steak, on winning an Applebee's gift card.



## Circle of



Grand Prize winner Mary Phelan (also new Dir of University Outreach) shows off her free pass to the PDD.



## Winners



New Dir of Certifications Denise Boeding shows of her prize winnings. A Chili's giftcard! In background, another Chapter member opens up her winnings.