



Building professionalism in project management.™

**Project Management Institute**

**Eastern Iowa Chapter**

# 100's NUGGET

2006 Issue 4

April 2006

P.O. Box 1811  
Cedar Rapids, IA 52406-1811

<http://www.pmieasterniowa.org>  
[communications@pmieasterniowa.org](mailto:communications@pmieasterniowa.org)

Do you have a question about being a member or about changing your membership contact details?

Be sure to contact the Director of Member Relations.

See the contacts page for the email address.

## Inside this issue:

Presidents Corner	02
Membership Update	03
Program Recap	03
Chapter Meetings	03
Website Statistics	04
Training Schedules	04
Chapter Contacts	06

## Our Next Chapter Meeting - April 11th

Our next chapter meeting will be held Tuesday, April 11th from 5:45 to 8:00 p.m. at the Quality Inn & Suites Highlander, 2525 North Dodge, Iowa City - The Quality Inn phone number is (319) 354-2000.

### Program Speaker:

Ryan Gardner, Director of Auxiliary Services for Kirkwood Community College, will present how he manages projects for the college that primarily consist of contractors. Ryan will focus on the recent building addition at KCC and the lessons learned from this project.

### Program Schedule:

5:45 - 6:15 Registration and social time  
6:15 - 6:50 Dinner  
6:50 - 7:00 Opening and announcements by Bob Sanders  
7:00 - 7:45 Presentation and wrap-up  
7:45 - 8:00 PMI Eastern Iowa business report

### Our dinner buffet will include:

- Grilled Chicken Breast
- Sliced Baked Ham
- Potatoes with Butter & Chives
- Green Beans Almandine
- Cottage Cheese
- Tossed Salad w/dressings
- Oriental Salad
- Cheesecake Dessert
- Dinner rolls & Sweet Rolls
- Coffee, Tea or Milk



### Cost:

\$20.00 for members and guests.

Please RSVP no later than Friday, April 7th to  
[programregistration@pmieasterniowa.org](mailto:programregistration@pmieasterniowa.org)

Paddy Puthige, PMP  
VP of Operations, PMI Eastern Iowa Chapter

## President's Corner - by Bob Sanders, PMP

As Project and Program Managers we recognize the need to constantly improve our skills and increase our knowledge of best practices within the project management profession. PMI also recognizes that need in this area and I would like to share with you one of many benefits that PMI provides to its members, eReads & Reference.

eReads & Reference is an exclusive PMI Member Benefit accessed through the PMI Members Area on [www.pmi.org](http://www.pmi.org). This is an online publication search system powered by Books24X7, a leading provider of web-based digital technical and business reference materials. The service provides PMI members with direct online access to hundreds of books from the world's leading business publishers. These books, unabridged and published in a web-based format, give members the convenience of reading the books they want to read when they want to read them. The available titles cover a myriad of topics, such as project management, leadership, teams, knowledge management, communication strategies, and much more!

I encourage you to take advantage of your PMI membership benefits such as eReads & Reference. PMI is a great resource to get the information that you readily need.

Bob Sanders, PMP  
President  
PMI Eastern Iowa Chapter

## Check Out The PMI National Website

Do you sometimes want to know what is going on at PMI National level? Consider investing some time on the PMI National website ([www.pmi.org](http://www.pmi.org)) to learn more about PMI news items like the following:

- Register onsite for MEGA Seminars World Anaheim. More on the website...
- Visit the newly updated standards section. More on the website...
- Influential women sought. More on the website...
- Call for 2007 PMI Board Other Committees. More on the website...
- Earn 14 PDU's with PMI's newest web based self study course. More on the website...
- The Call for presentation proposals for Global Congress 2006—Latin America is open. More on the website...
- Project management professional (PMP®) certification named to [certcities.com](http://certcities.com)'s "10 hottest certifications for 2006". More on the website...
- PMI Professional Awards 2006 call for nominations now open. More on the website...
- CEO questions and answers about strategy. More on the website...
- Open call for volunteers to participate on the OPM3 2008 Update Project Team. More on the website...

Check out [www.pmi.org](http://www.pmi.org) to see so many more PMI National items.

## Chapter Meeting Program Recap

March 14, 2006 - "WSS – Windows Share Point Services by New Horizons"


New Horizons presented an PowerPoint presentation of Windows Share Point Services. WSS allows a company to create Share Points for various departments to share information. Security can be configured at a department or individual level. Update alerts can also be triggered to alert people of new information that has been posted.

Total Attendance: 55

Guests: 13



## Chapter Meetings Schedule (subject to change)

	Date and Time	Location	Topic and Presenter
	Apr 11 - 5:45pm– 8:00pm	Quality Inn & Suites Highlander 2525 North Dodge, Iowa City	"Managing Contractors" by Ryan Gardner
	May 09 - 7:30-9:00 am	Clarion Hotel & Convention Center, 525 33rd Ave SW, Cedar Rapids	"Challenges with managing off-shore resources" by Muthu Kannan
	Jun 13 - TBD	TBD	TBD

## Membership Update

PMI Eastern Iowa Chapter membership stands at **276**, with **136 PMP®s** and **1 CAPM®s**. Our chapter has representation from 55 companies. Our top five companies by member count are Pearson (112), Rockwell Collins (23), Intermec (17), and Aegon (12), and FPL Duane Arnold Energy Center (8) .

### New PMP®s:

Frank George, Ginna Holt, Mike Wood and Charlie Zalewski, FPL Duane Arnold Energy Center; Cheryl Magnuson, Intermec.

### New Members:

We welcome: Nader El-Zein, RMT; Laura Tabayoyong, Paul Ferrise and Suzanne Ramsey-Carter, Pearson; Muthukumar Kannan. We are glad to have you join the PMI Eastern Iowa Chapter!

Want to join PMI and/or our Chapter? Click through to our membership page located at

<http://www.pmieasterniowa.org/membership.htm>

### PMI Chapter Transfers:

If you have a need to transfer chapters because you have moved or relocated due to employment location changes, contact [componenttransfer@pmi.org](mailto:componenttransfer@pmi.org).

### PMI Member Contact Updates:

Contact the Director of Member Relations at [director.memberrelations@pmieasterniowa.org](mailto:director.memberrelations@pmieasterniowa.org).

## Guess when PMI's 250,000th member will join.

PMI's 250,000th Member Race is underway and anyone may enter! The individual (member or nonmember) who guesses closest, without exceeding, the date and time that the 250,000th member joins PMI will be the winner. If no one guesses correctly, then the contest winner will be the individual who guesses closest without exceeding the actual time the 250,000th member joins. Visit the [contest web page](#) for information on rules, prizes, incentives and information on how members and non-members may enter the race. The sooner you enter, the better your chances to win.



## Web Site Statistics - top ten active pages

51 different pages-url	Viewed	Average size	Entry	Exit
/index.htm	176	3.18 KB	138	76
/courses.htm	43	8.26 KB	1	7
/calendar.htm	41	20.31 KB		11
/contacts.htm	34	10.74 KB	4	17
/Dixon.htm	29	9.44 KB	27	24
/pdu.htm	28	32.29 KB	11	16
/newsletter.htm	21	9.29 KB	1	2
/TestTips.htm	18	2.04 KB		4
/Membership.htm	18	18.39 KB	1	7
/progdtdl.htm	17	5.58 KB	3	8

## PMI Community Post -

Project Management Salary Survey - Fourth Edition is now available online to member at the [www.pmi.org](http://www.pmi.org) website.

## PMI Chapter Neighborhood - Adjacent PMI Chapter Announcements

The Madison/South Central WI Chapter of PMI is proud to sponsor its fifth annual Professional Development Day scheduled for Thursday, May 4, 2006. This event is being held at American Family Training Center, 6000 American Parkway, Madison, WI and allows for 5 PDUs to be earned by PMPs. Presenters and topics include the following:

- Frank Saladis, PMP - Your Future as a Project Manager (Keynote Presentation)
- Pam Stampen - Linking Projects to Corporate Strategies
- Brad Malone - Managing an Organizational Change Project
- Kathryn Jeffers - Project People Skills
- David Antonioni, PhD - Project Management Practice & Capability
- Bill Paxton - How People Really Work
- Dennis Stauffer - Clockwise Project Leadership, Patterns of Success
- Fred George - Moving from Waterfall PM to Agile PM, Parts 1 and 2

Obtain more detail at the Madison/South Central WI Chapter web site page

<http://www.pmi-madison.org/display.aspx?page=/Upcoming%20Events/Professional%20Development%20Day> .

## Chapter Sponsored Professional Development (subject to change)

The following chapter sponsored professional development opportunities are available.

Date	Time	Course ID	Cost	PDUs	Location	Title
04/17/06	5 - 9pm	C100-1600	\$125 PMI Member \$150 Non-Member	4	Kirkwood	Project Scope / Requirements Management and Change Control
05/15/06	5 - 9pm	C100-1700	\$125 PMI Member \$150 Non-Member	4	Kirkwood	Project Quality Management and Defect Detection / Prevention
06/19/06	5 - 9pm	C100-1800	\$125 PMI Member \$150 Non-Member	4	Kirkwood	Project Communications Management and Performance Reporting
07/18/06	5 - 9pm	C100-1900	\$125 PMI Member \$150 Non-Member	4	UI MBA CTR Cedar Rapids	Project Procurement and Vendor Management

Send questions to [director.professional@pmiasterniowa.org](mailto:director.professional@pmiasterniowa.org).

## Priority Management Training Schedule (subject to change)

The following Priority Management sponsored professional development opportunities are available.

Date	Course ID	PDU's	Location	Title
4/13/06	1161-TN0601000	7	Web workshop at your desk	Working Smart with Microsoft Outlook
5/16/06	1161-TN060100	7	Cedar Rapids, IA	Working Smart with Microsoft Outlook
5/17/06	1161-TN070100	7	Web workshop at your desk	Working Smart with Lotus Notes
5/18/06	1161-TN0601000	7	Web workshop at your desk	Working Smart with Microsoft Outlook
6/15/06	1161-TN0601000	7	Web workshop at your desk	Working Smart with Microsoft Outlook

Please find more details at [http://www.prioritymanagement.com/rsmith/workshop\\_schedule/](http://www.prioritymanagement.com/rsmith/workshop_schedule/) or send questions to [rsmith@prioritymanagement.com](mailto:rsmith@prioritymanagement.com).

## New Horizons Training Schedule (subject to change)

The following courses are available at New Horizons of Cedar Rapids in the coming months.

Date	PDU's	Location	Title
4/27/06	6.5	New Horizons	Microsoft Project 2003 - L1
4/28/06	6.5	New Horizons	Microsoft Project 2003 - L2
5/11/06	2	New Horizons	Microsoft Scheduling Seminar Series: I of III - Scheduling
5/15/06	35	New Horizons	Project Management for Professionals
6/8/06	6.5	New Horizons	Microsoft Project 2003 – L1
6/9/06	6.5	New Horizons	Microsoft Project 2003 - L2
6/22/06	2	New Horizons	Microsoft Scheduling Seminar Series: II of III- Contouring
6/26-6/28	19.5	New Horizons	Project Management for Professionals Exam Preparation
6/29/06	6.5	New Horizons	Project Risk Management
6/30/06	6.5	New Horizons	Project Communication
8/3/06	2	New Horizons	Microsoft Scheduling Seminar Series: III of III- Scheduling Gaps, Fixed Duration, Things that make you go Hmmm?

Visit [www.newhorizonscr.com](http://www.newhorizonscr.com), email [events.cedarrapids@newhorizons.com](mailto:events.cedarrapids@newhorizons.com), or call 319-294-9035.

## PMI Eastern Iowa Chapter Contacts

### 2006 Board of Directors

President	Bob Sanders, PMP	<a href="mailto:president@pmieasterniowa.org">president@pmieasterniowa.org</a>
Past President	Steve Rucker	<a href="mailto:pastpresident@pmieasterniowa.org">pastpresident@pmieasterniowa.org</a>
VP of Communications and Publicity	Darin A. Hart, PMP	<a href="mailto:communications@pmieasterniowa.org">communications@pmieasterniowa.org</a>
VP of Education	Suzie Nielsen, PMP	<a href="mailto:education@pmieasterniowa.org">education@pmieasterniowa.org</a>
VP of Finance	Leo Bertling, PMP	<a href="mailto:finance@pmieasterniowa.org">finance@pmieasterniowa.org</a>
VP of Operations	Paddy Puthige	<a href="mailto:operations@pmieasterniowa.org">operations@pmieasterniowa.org</a>
VP of Outreach	Dale Moore, PMP	<a href="mailto:outreach@pmieasterniowa.org">outreach@pmieasterniowa.org</a>

### 2006 Directors

Director At-Large	Kristi Burkle, PMP	<a href="mailto:director.atlarge@pmieasterniowa.org">director.atlarge@pmieasterniowa.org</a>
Director of Corporate Outreach	Sean Williams	<a href="mailto:director.corpoutreach@pmieasterniowa.org">director.corpoutreach@pmieasterniowa.org</a>
Director of Individual Outreach	David Smiley, PMP	<a href="mailto:director.indoutreach@pmieasterniowa.org">director.indoutreach@pmieasterniowa.org</a>
Director of University Outreach	OPEN	<a href="mailto:director.unioutreach@pmieasterniowa.org">director.unioutreach@pmieasterniowa.org</a>
Director of Logistics	Bhaskar Pulikal, PMP	<a href="mailto:director.logistics@pmieasterniowa.org">director.logistics@pmieasterniowa.org</a>
Director of Marketing	OPEN	<a href="mailto:director.marketing@pmieasterniowa.org">director.marketing@pmieasterniowa.org</a>
Director of Member Relations	Glenda Dixon, PMP	<a href="mailto:director.memberrelations@pmieasterniowa.org">director.memberrelations@pmieasterniowa.org</a>
Director of Newsletter	Doug Williams, PMP	<a href="mailto:director.newsletter@pmieasterniowa.org">director.newsletter@pmieasterniowa.org</a>
Director of Professional Development	Barry Ehrig, PMP	<a href="mailto:director.professional@pmieasterniowa.org">director.professional@pmieasterniowa.org</a>
Director of Programs	Jennifer Ruppert, PMP	<a href="mailto:director.programs@pmieasterniowa.org">director.programs@pmieasterniowa.org</a>
Director of Technology	Steve Sawyer, PMP	<a href="mailto:director.technology@pmieasterniowa.org">director.technology@pmieasterniowa.org</a>
Director of Volunteers	Nita Inani	<a href="mailto:director.volunteers@pmieasterniowa.org">director.volunteers@pmieasterniowa.org</a>
Director of Website	Jim Kircher	<a href="mailto:director.website@pmieasterniowa.org">director.website@pmieasterniowa.org</a>

### Other Contacts

Chapter Newsletter Editor	Editor	<a href="mailto:editor@pmieasterniowa.org">editor@pmieasterniowa.org</a>
Chapter Monthly Program Registration	Program Registration	<a href="mailto:programregistration@pmieasterniowa.org">programregistration@pmieasterniowa.org</a>
Chapter Training Registration	Training Registration	<a href="mailto:trainingregistration@pmieasterniowa.org">trainingregistration@pmieasterniowa.org</a>
Chapter Web Mail Administrator	Web mail	<a href="mailto:webmail@pmieasterniowa.org">webmail@pmieasterniowa.org</a>
Chapter Website Administrator	Webmaster	<a href="mailto:webmaster@pmieasterniowa.org">webmaster@pmieasterniowa.org</a>



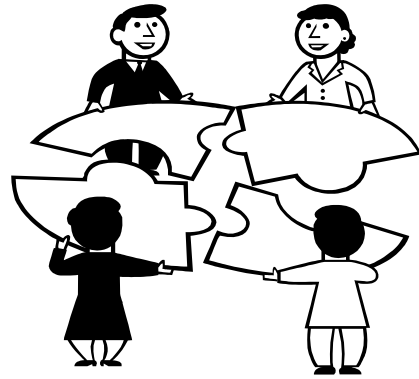
# IEEE ProCon 2006

9th Annual IEEE Cedar Rapids Section  
Professional Development Conference

***“Getting It Right –  
Together!”***

**Tuesday May 2, 2006**

*Clarion Hotel and Convention Center  
Cedar Rapids*



Plan to attend the Ninth Annual IEEE Cedar Rapids Section professional development conference, **ProCon 2006**, with the theme **“Getting It Right - Together”**. This one-day, two-track regional event for technical professionals, engineers, and others will be held **May 2, 2006**, at the Clarion Hotel and Convention Center in Cedar Rapids. ProCon has an exciting lineup of half-day workshops. Plan now to join us!

## **Former Mayor of Cedar Rapids *Lee Clancey* will be the luncheon speaker.**

**Leslie Martinich** (leslie@competitivefocus.com) specializes in innovation and engineering management. She is President of Competitive Focus, which provides training and consulting in technology management. Leslie will be presenting two workshops:

- ***Working Effectively: How You Can Make a Difference in Your Organization.*** This dynamic and interactive workshop will provide you with the tools to recognize and leverage individual differences, to increase team performance, and to identify meaningful work for all team members. You'll learn how to utilize different problem-solving and communication preferences to increase your own and your team's productivity. You'll leave this session with an action plan to help you to make your work meaningful and achieve your goals.
- ***Gaining Support for Your Projects*** provides you with a comprehensive and systematic approach to acquire the resources needed to successfully complete your projects. You will learn to build and nourish alliances and networks, negotiate effectively, align your team's efforts with your organization's goals, deal with risk, uncertainty and change, and communicate persuasively. You will leave this session energized with a renewed sense of how to achieve your goals.

**Judith A. Leavitt** is Principal Market Research Analyst in Strategic Planning at Rockwell Collins, Inc. in Cedar Rapids, IA. She served as manager of Rockwell Collins' corporate library for 17 years before organizing an enterprise-level corporate intelligence function for Rockwell Collins. Leavitt has taught classes in Special Libraries and in Competitive Intelligence as an adjunct faculty member at the University of Iowa School of Library and Information Science. Judith will be presenting a morning workshop:

- ***Enterprise Risk Management (ERM)*** is a portfolio-based approach to align risk management investments with organizational objectives. It requires an infrastructure that systematically manages risks across organizational and functional boundaries. ERM intersects with competitive intelligence, because it requires systematic scanning of the internal and external environment for potential risks or the increasing likelihood of identified risks.

**Gale Mote** (<http://www.galemoteassociates.com>) has been designing and delivering customized training courses and motivational presentations for over 11 years. She provides a unique and exciting educational experience. Every session is participant centered respecting the needs of the adult learner. Each workshop is very interactive. Class sessions include group discussion, small team activities, personal assessment, games, and videos. Gail will be presenting an afternoon workshop.

- ***Clarity, Conflict, and Commitment: Making TeamWORK!*** Participants will learn how to ask the right questions and work collaboratively together to make better decisions that are implemented with more success. Participants will understand how to engage in healthy conflict that results in higher level of commitment and ownership of team decisions. They will learn how to hold themselves and others accountable for results without blames and excuses while building a foundation of trust and open communication.



# IEEE ProCon 2006

9th Annual IEEE Cedar Rapids Section Professional Development Conference

## Getting It Right - Together

### Tuesday May 2, 2006

	Track 1	Track 2
	<i>Judith Leavitt</i> <b>EARLY WARNING SYSTEMS: Using Competitive Intelligence to Map Enterprise Risks &amp; Develop an Early Warning System</b>	<i>Leslie Martinich</i> <b>Working Effectively: How You Can Make a Difference in Your Organization</b>
<b>8:30–11:45</b>		
<b>12:00–12:30</b>	<b>Lunch (included in registration fee)</b>	
<b>12:30 - 1:00</b>	<b>Luncheon Speaker: <i>Lee Clancey</i> <i>Former Major of Cedar Rapids</i></b>	
<b>1:15-4:30</b>	<i>Gale Mote</i> <b>Clarity, Conflict, and Commitment: Making TeamWORK!</b>	<i>Leslie Martinich</i> <b>Gaining Support for Your Projects</b>

Register Online at <http://procon2006.org> starting Mar. 1, 2006

or use this form!

### REGISTRATION FORM

Please print information in capital letters as you wish it to appear in the conference list of attendees and on your badge.

Use a separate form for each registrant.

LAST NAME	FIRST NAME	MI
<input type="text"/>	<input type="text"/>	<input type="text"/>
TITLE	BADGE FIRST NAME	
<input type="text"/>	<input type="text"/>	
COMPANY		
<input type="text"/>		
STREET ADDRESS		
<input type="text"/>		
CITY	ST	ZIP
<input type="text"/>	<input type="text"/>	<input type="text"/>
TELEPHONE	FAX	COUNTRY
<input type="text"/>	<input type="text"/>	<input type="text"/>
E-MAIL ADDRESS		
<input type="text"/>		

Please circle the session in which you intend to participate.\*

Morning:: Track1 Track 2

Afternoon: Track 1 Track 2

\*Note: You are free to switch between tracks in the morning and afternoon—this information is for planning purposes only.

*All registrations include lunch as well as morning & afternoon breaks*

Through April 13, 2006 IEEE Members \$65.00 All others \$75.00

After April 13, 2006 IEEE Members \$75.00 All others \$85.00

Full-time Undergraduate or Graduate Student/Unemployed/Retired/IEEE Lifetime Members: \$25.00

*Please note if you would like a vegetarian meal.*

REGISTRATION FEE: \$ \_\_\_\_\_

METHOD OF PAYMENT: Cash Check MasterCard Visa Discover

Make checks (drawn on a U.S. Bank in U.S. Dollars) payable to IEEE/ProCon 2006

Credit Card Number: \_\_\_\_\_ Exp. Date: \_\_\_\_\_

Credit Card Billing Address (if different from above \_\_\_\_\_)

Cardholder Name (please print) \_\_\_\_\_

Signature: \_\_\_\_\_

Please return completed registration form (separate form for each registrant) with payment to:

IEEE Cedar Rapids Section/ProCon 2006 • PO Box 451 • Marion IA 52302