



Building professionalism in project management.™

Project Management Institute

Eastern Iowa Chapter

100's NUGGET

2005 Issue 9

September 2005

P.O. Box 1811
Cedar Rapids, IA 52406-1811

<http://www.pmieasterniowa.org>
communications@pmieasterniowa.org

**Check out the
new training
courses being
offered by the
chapter.**

See page 5 and 6.

**Inside this
issue:**

Presidents Corner	2
August Program Recap	2
Upcoming Meetings	2
Website Statistics	3
Membership Update	3
2006 BOD Candidates	4
New Course Offerings	5
PMI Web Based Certification System	5
Training Schedules	6

Our Next Chapter Meeting - September 20th

The program for September will be Fun Night and election of officers held at New Horizons Computer Learning Center, 1850 Boyson Road in Hiawatha. It will be FREE to Chapter Members and Guests. Along with hors d'oeuvres and soft drinks, the Fun Night activity will be a scavenger hunt, using computers and other resources throughout the New Horizons facility.

Come and test your knowledge of PMI and the PMBOK as well as some little known or cared about factoids. You will also have the opportunity to network with new people -- New Horizons will invite recent project management class attendees to join us and learn more about our organization.

Hors'dourves will be provided.



Program

5:45 - 6:00 Registration and voting
6:00 - 6:30 Opening by President Bob Sanders and hors'dourves
6:30 - 7:30 Scavenger hunt
7:30 - 8:00 Prize awarding, election results, final Announcements and Wrap-Up.

Please RSVP no later than Friday, September 16th to
ProgramRegistration@pmieasterniowa.org.

Stephen Schmitz,
VP of Programs

President's Corner - by Bob Sanders, PMP

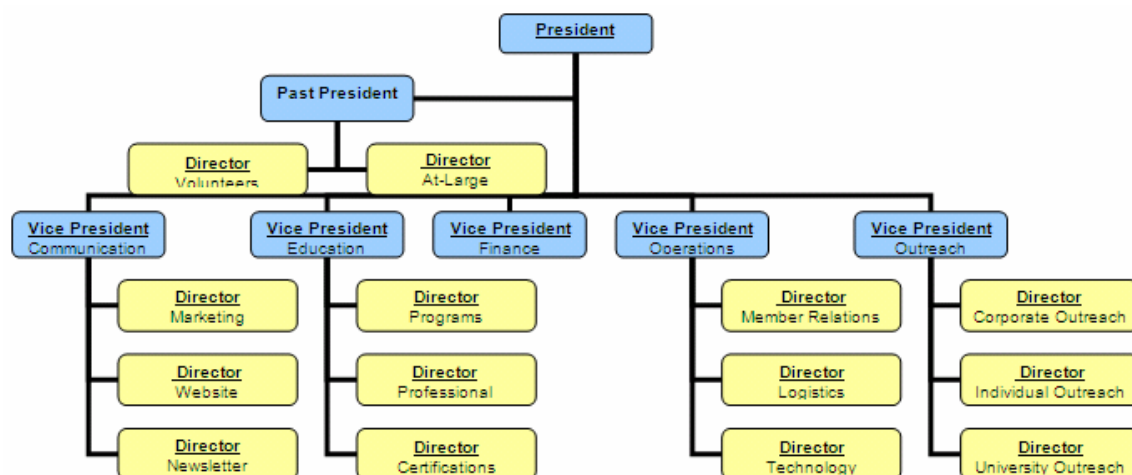
In 2006 the PMI Eastern Iowa Chapter will have a new look. At our August Program Event changes to our Chapter By-Laws was unanimous approved resulting in a change in the way we currently operate our chapter. Our Board of Directors will become more strategic in nature and will now have a set of Directors that can work on specific chapter goals and objectives that will result in better membership benefits.

The new structure will enhance collaborative planning, extends leadership as a resource,

enables individual growth, and suggests a learning organization that invests in its membership.

In September, the 2006 Board of Directors will be elected. The 2005 Board and the newly elected 2006 Board will spend the remainder of the year appointed the director positions as well as planning for 2006.

Sincerely,
Bob Sanders, PMP
President, PMI Eastern Iowa Chapter



August Program Recap - by: Stephen Schmitz

Twenty-two members and seven guests enjoyed the August 9th breakfast meeting. Jamie Northrup, PMP, VP of Professional Development, previewed the PMP exam which will be implemented on September 30th, 2005. He provided handouts detailing the changes in exam format, testing policy, and overall application process. PMPs in the audience appreciated Jamie's second topic, how to maintain certification through the Continuing Certification

Requirements (CCR) process. Bob Sanders, PMP, then reviewed the proposed changes to the chapter bylaws. A ballot was taken, and the proposed changes were approved 22-0.



Date	Time	Location	Topic
Sept 20th	6:00 - 8:00 pm	New Horizon's Learning Center	Annual Fun Night
Oct 11th	6:00 - 8:00 pm	Quality Inn Iowa City	TBD

Web Site Statistics - by Darin A. Hart, PMP

August web site statistics are included below.

Pages-URL (Top 20) - Full list - Entry - Exit						
63 different pages-url		Viewed	Average size	Entry	Exit	
/index.htm		171	4.45 KB	110	47	
/calendar.htm		65	16.56 KB	13	21	
/Dendurent.htm		53	3.74 KB	28	33	
/TestTips.htm		45	2.36 KB	4	8	
/Dixon.htm		43	9.22 KB	35	35	
/pdu.htm		42	26.74 KB	16	12	
/newsletter.htm		40	8.05 KB	2	5	
/jobs.htm		40	3.11 KB	2	13	
/documents.htm		39	3.07 KB		3	
/courses.htm		33	2.68 KB	2	3	

Membership Update - by Darren Benzing, PMP

PMI Eastern Iowa Chapter membership stands at **249**, with **88 PMP@s**. Our top companies by member count are Pearson (103), Rockwell Collins (17), Intermec (16), and Aegon (14), Iowa Health System (5), and Perot Systems (5).

New PMP@s: Vijay Kanumilli, Kristine Klahn, Carol Nickels, and Tom Ward

New Members: We welcome: Karmen Dillon from Iowa Health System, Hans Hoppe and Karen KuceraWright from Perot Systems, Lowell Johnson from DAEC, Vijay Kanumilli from MCI, Anne Parmley and Deb Sheets from Pearson, David Smiley from Volt, Dan Smith from Rockwell Collins, and Jim Wichert from DTN. We are glad to have you in the PMI Eastern Iowa Chapter!



Renewing Members: Matthew Brunscheen, Kim Carson, April Clark, Darice Keating, Julia Klaren, Anna Kregel, Suzie Nielsen, Bhaskar Pulikal, Kristi Urich, Ron Weathers, and Lee Wolf. Thank you for renewing your membership for another year.

Want to join PMI and/or our Chapter: Check out: <http://www.pmieasterniowa.org/Membership.htm>

Chapter transfers: If you have a need to transfer to another chapter because you have moved or relocated due to changes in employment or work locations, please contact componenttransfer@pmi.org.

2006 BOD Candidates

President - Bob Sanders, PMP®

Bob Sanders, PMP®, is a technical operations manager with Pearson Educational Measurement in Iowa City. A chapter member since 2000, and a PMP® since July 2001, Bob served last year as President of the chapter and the previous two years as VP of Programs. Bob has represented the Eastern Iowa Chapter at PMI Leadership meetings since 2003.

Bob's vision for 2006 is to extend chapter leadership as a resource to the chapter membership and continue to enhance individual growth.

VP Finance - Leo Bertling, PMP®

Beginning in January 2005, Leo Bertling joined Pearson Inc. in Iowa City as the Scoring Center Manager of Planning and Analysis. Prior to joining Pearson, Leo worked for slightly less than 3 years as a supervisor for the Transportation Security Administration (TSA). He was a shift supervisor and one of three TSA authorized instructors (TAI) for the Moline, ILL. hub airport. Leo earned his PMP certification while at MCI WorldCom in Cedar Rapids in 2000. While there he worked as a software release manager and a project manager. He managed both domestic and international telecommunications projects for MCI WorldCom.

His goals for 2006 include maintaining accurate financial records for the chapter.

VP Communications and Publicity - Darin Hart, PMP®

Darin Hart is a certified PMP® and has over 13 years of Information Technology experience in Project Management, Application Development and Architecture, and Quality Assurance Testing in the following industries: Telecommunications, Energy, Insurance, Hospitality, Engineering & Construction and Manufacturing. Over 12 years of this time he has been with Perot Systems Corporation with 11 years in Cedar Rapids, IA. Darin is a Program Manager for an account within Perot Systems' Engineering and Construction industry group and is also responsible for the day to day operations of the Cedar Rapids office. He is also enrolled in the University of Iowa's MBA-PM program and hopes to complete his MBA by December 2007.

His goals for 2006 are to continue to provide accurate and timely communication to all current and prospective members of the Eastern Iowa Chapter. In addition his goal is to help the 3 Directors reporting to the VP of Communications and Publicity take on their new positions and enhance the changes that he has been working on over the past couple of years.

VP Outreach - Dale Moore

Dale is vice president of project delivery for Shive-Hattery. In that capacity, he is responsible for the long term improvement of the way projects are delivered to customers. He has 34 years experience in the building design and construction industry with 30 years at Shive-Hattery. At Shive-Hattery, his previous experience has included design engineer, project engineer, project manager, team leader and office director.

VP Operations - Paddy Puthige, PMP®

Paddy Puthige has over 12 years of experience in Information Technology including Project Management. Currently Paddy is a Software project manager at NCS Pearson in Iowa City. He is with Pearson since December 2002. Prior to this Paddy worked at MCI for 7 years in Cedar Rapids.

Paddy has an engineering degree (Computer Science and Engineering) and a MBA from the University of Iowa. He has received a Project Management Professional (PMP®) certification from the Project Management Institute (PMI) in 2002.

His goals for 2006 are to continue to provide support to the Chapter with respect to Member relations and Logistics. In addition, his goal is to help identify technology needs of the chapter and help ways to enhance the existing operations using new technology.

VP Education - Suzie Nielsen, PMP®

Suzie Nielsen has over 8 years of project management experience and is currently the Resource Manager for a staff of 36 project managers at PEM in Iowa City, IA. Previously Suzie was the project manager on several large state assessment programs at PEM. Before joining PEM in 1991, Suzie held management positions in the retail industry.

Currently Suzie serves on the Board of Directors of the North Liberty Community Food and Clothing Pantry.

Suzie earned her B.S. in Journalism/Mass Communications from The University of Iowa and Project Management Professional (PMP) certification from the Project Management Institute (PMI).

Chapter Sponsored Course Descriptions

- **Introduction to Project Management Workshop (C100-1100)** - This half day course introduces participants to the project management framework and concepts including the project management process areas, and the 9 knowledge areas. Participants will become familiarized with the 39 project management processes. Through a series of class exercises and case studies, participants will initiate, plan, execute, control, and close a project plan. They will perform scenario based integration management with scope, time, cost, and quality management. Participants will earn 4 PDUs.
- **Proactive Risk Management Workshop (C100-1200)** - This half day class examines project risks from both a top-down and bottom-up perspective using a proven five-step risk management process. Participants will learn how to evaluate and respond to risk at the project and task levels using effective tools and a highly regarded assessment model. Included in the class are a number of real world exercises and corporate case studies that take you from risk identification, at the beginning of a project, through the challenges of ongoing assessment of risks throughout the project. You will practice a proactive approach to risk management - based on a clear understanding of the powerful nature of both qualitative and quantitative approaches to risk management. Participants will earn 4 PDUs
- **Project Planning and Execution using MS Project (C100-1300)** - This half day course integrates project management theory and practice by introducing project managers to PMI endorsed project planning and execution while teaching students some of Microsoft® Project's more powerful capabilities. The class demonstrates how those capabilities can be used to transform project concepts into a manageable project schedule. It also demonstrates powerful and practical ways to track a schedule. The class is instructor led and includes many hands-on labs. Participants will earn 4 PDUs.
- **Pipeline planning and Resource Management using MS Project (C100-2300)** - This half day course is designed to instruct Project Managers on techniques to manage project resources, pipelines, and multiple projects using Microsoft® Project's more powerful capabilities. The class demonstrates how those capabilities can be used to transform resource management concepts into your Microsoft® project schedule. The topics covered in "Pipeline Planning and Resource Management using MS Project" are as follows: -Skills assessment, Team Development, and Resource Assigning -Resource Leveling, Overallocation, and Resource Inefficiencies -Developing Resource Pools -Master Project Development -Project Pipeline Development
- **OPM3 for Organizational Execution (C100-1400)** - This half day class gives participants a thorough understanding of the Organizational Project Management Maturity Model (OPM3®). The purpose of PMI's OPM3 is to provide guidance for improving organizational project management processes. The OPM3 places proven practices into a structure that helps your organization assess its organizational project management maturity in terms of industry best practices and capabilities. It establishes priorities for improvement and guides the implementation of these improvements. This class stresses the importance of having standardized processes within the organization to encapsulate the OPM3 Best Practices and Capabilities. Participants will receive 4 PDUs.

The new Web-based Certification System

The Web-based system is designed to make the overall application process more understandable. Additionally, candidates can now take a more active role in their credentialing process and can receive information about their status much faster than before. The look and feel of the system is user-friendly, allowing each candidate to create a user name and password, thus gaining continuous access to his or her credential record.

Some of the features include:

- Online application for both Project Management Professional (PMP®) and Certified Associate in Project Management (CAPM®) credentials - globally;
- Automatic e-mail notifications when candidates' application are approved or when additional information is needed;
- A self-service feature, allowing candidates access to copies of receipts, score reports and notification of eligibility status are available;
- Online registration and scheduling of paper-based exam administration, for those candidates living in areas that do not have computer-based testing centers; and
- Access to credentialing records at any time by all credentialed individuals (PMPs and CAPMs).



2005 BOARD OF DIRECTORS

President:

Bob Sanders, PMP
thePres@pmieasterniowa.org

President Ex-Officio:

Steve Rucker
Ex-Officio@pmieasterniowa.org

VP Communications:

Darin Hart, PMP
Communications@pmieasterniowa.org

VP Finance:

Connie Smith, PMP
Finance@pmieasterniowa.org

VP Membership:

Darren Benzing, PMP
Membership@pmieasterniowa.org

VP Professional Development

Jamie Northrup, PMP
ProfessionalDevelopment@pmieasterniowa.org

VP Programs:

Steve Schmitz
Programs@pmieasterniowa.org

VP Special Projects:

Leo Bertling, PMP
SpecialProjects@pmieasterniowa.org

Chapter Sponsored Professional Development

The following chapter sponsored professional development opportunities are available.

- Introduction to Project Management Workshop (C100-1100)
- Proactive Risk Management Workshop (C100-1200)
- Project Planning and Execution using MS Project (C100-1300)
- Pipeline planning and Resource Management using MS Project (C100-

Date	Course I.D.	PDUs	Program Title (Description)
09/26/2005	C100-1100	4	Introduction to Project Management Workshop
10/17/2005	C100-1200	4	Proactive Risk Management Workshop
10/24/2005	C100-1300	4	Project Planning and Execution using MS Project
11/07/2005	C100-2300	4	Pipeline Planning and Resource Management using MS Project
12/12/2005	C100-1400	4	OPM3 for Organizational Execution

2300)

- OPM3 for Organizational Execution (C100-1400)

External Training Opportunities

PROGRAM	DATES	TIME
Priority Manager WebShop	Oct 12...19	10:00am – 12:00 EST
Working Sm@rt with Micro-soft Outlook Webshop	Sept 20...27 Oct 12...19 Nov 16...23 Dec 7...14	1:30 -3:30pm EST 1:30 -3:30pm EST 1:30 – 3:30pm EST 1:30 – 3:30pm EST
Working Sm@rt with Lotus Notes Webshop	Sept 21...28 Nov 8...15	2:00 – 4:00pm EST 2:30 – 4:30pm EST
Working Sm@rt with Group-Wise WebShop	Oct 4...11	2:30 – 4:30pm EST

Contact:

Rich Smith "Productivity Pro" CFPE
 Priority Management Phone 319-447-9442
 7324 Hampshire Dr. NE Cedar Rapids, Ia 52402
rsmith@prioritymanagement.com
www.prioritymanagement.com/rsmith

Introduction to Project Management Workshop

Course Description:

Intro to Project Management Workshop: This 1-Day course was developed to equip project managers and associate project managers with the knowledge and tools to execute projects using PMI's world standard Project Management Framework. The class provides participants a detailed understanding of the PMI project management framework and concepts including the project management process areas, and 9 knowledge areas. Participants will understand the 39 project management processes through a series of class exercises and case studies. Participants will initiate, plan, execute, control, and close a project plan to the project Triple Constraint. They will perform scenario based integration management with scope, time, cost, and quality management.

Learning Objectives: Understand Project Management Fundamentals through hands-on exercises and case studies. Participants will have a good start on studying for the Project Management Professional (PMP) and Certified Associate Project Manager (CAPM) exams. Attendees who are Project Management Professionals (PMP) will receive 4 PDU credits with the PMI under category 4.

Course Date & Location:

September 26 (5:00pm – 9:00pm)
Kirkwood Community College
Nielsen Hall Room 212
6301 Kirkwood Blvd. SW
Cedar Rapids, Iowa 52406

Instructor:

Jamie Northrup, PMP is a Program Manager and Process Engineer at NCS Pearson in Iowa City, Iowa. A graduate of the University of Iowa, Jamie holds a BA Degree in Business Administration: Management Information Systems. He is certified as a PMP through the Project Management Institute, and is trained in CMMI through the Software Engineering Institute at Carnegie Mellon University. Jamie has also taught technology classes as an adjunct professor with Kirkwood Community College.

Cost:

The cost of the **September 26** Introduction to Project Management Workshop is **\$150.00** for chapter members and **\$199.00** for non-chapter members. There are no prerequisites to this course and all of the materials will be provided. Please make checks payable to: PMI, Eastern Iowa Chapter. Please mail checks to: P.O. BOX 1811, Cedar Rapids, IA 52401-1811. **This form must be completed, mailed, and received by COB 24 September 2005. In addition to sending in the form please send an e-mail to trainingregistration@pmieasterniowa.org so that we can reserve your seat. Please forward any questions or concerns to professionaldevelopment@pmieasterniowa.org.**

Required Sign-up Information

PMI Identification #:	State:
First Name, MI, Last Name:	Zip:
Address:	Phone #:
City:	E-mail:

Pipeline Planning and Resource Management using MS Project

Course Description:

Pipeline Planning and Resource Management using MS Project: This course is designed to instruct Project Managers on techniques to manage project resources, pipelines, and multiple projects using Microsoft® Project's more powerful capabilities. The class demonstrates how those capabilities can be used to transform resource management concepts into your Microsoft® project schedule. The class is instructor led and includes many hands-on labs. The topics covered in "Pipeline Planning and Resource Management using MS Project" are as follows:

- Skills assessment, Team Development, and Resource Assigning
- Resource Leveling, Overallocation, and Resource Inefficiencies
- Developing Resource Pools
- Master Project Development
- Project Pipeline Development

Learning Objectives: Master many of the more powerful features of Microsoft® Project. Each student will understand the concepts necessary to manage project resources and the project pipeline. Though a series of very helpful "hands on" labs, participants will gain insights into how to Microsoft® Project 'thinks' about resource allocation and leveling. Attendees who are Project Management Professionals (PMP) will receive 4 Professional Development Unit credits with the PMI under category 4.

Course Date & Location:

Monday, November 7 (5:00pm – 9:00pm)
Kirkwood Community College
Nielsen Hall Room 212
6301 Kirkwood Blvd. SW
Cedar Rapids, Iowa 52406

Instructor:

Jamie Northrup, PMP is a Program Manager and Process Engineer at NCS Pearson in Iowa City, Iowa. A graduate of the University of Iowa, Jamie holds a BA Degree in Business Administration: Management Information Systems. He is certified as a PMP through the Project Management Institute and a core team member of the PMI OPM3 Second Edition team. He is trained in CMMI through the Software Engineering Institute at Carnegie Mellon University and has taught technology classes as an adjunct professor with Kirkwood Community College.

Cost:

The cost of the **November 7** class is **\$150.00 (\$199 dollars for non PMI members)**. There are no prerequisites to this course and all of the materials will be provided. Please make checks payable to: PMI, Eastern Iowa Chapter. Please mail checks to: P.O. BOX 1811, Cedar Rapids, IA 52401-1811. **Please have this form completed, and mailed, by COB 31 October 2005.** In addition to sending in the form please send an e-mail to trainingregistration@pmieasterniowa.org so that we can reserve your seat. Please forward any questions or concerns to professionaldevelopment@pmieasterniowa.org.

Required Sign-up Information

PMI Identification #:	State:
First Name, MI, Last Name:	Zip:
Address:	Phone #:
City:	E-mail:

OPM3 for Organizational Execution

Course Description:

OPM3 Overview Training: This class was developed to give organizations a thorough understanding of the Organizational Project Management Maturity Model (OPM3®). The purpose of PMI's OPM3 is to provide guidance for improving organizational project management processes. The OPM3 places proven practices into a structure that helps your organization assess its organizational project management maturity in terms of industry best practices and capabilities. It establishes priorities for improvement and guides the implementation of these improvements.

Learning Objectives: To understand the importance of having standardized Project Management Processes within your organization. It gives participants a thorough comprehension of the OPM3 methodology (process framework, processes, best practices, capabilities, outcomes, and associated KPIs). The class ensures that participants apply OPM3 principles to meet the needs of their organizations.

Course Date & Location:

Monday, December 12 (5:00pm – 9:00pm)
Kirkwood Community College
Nielsen Hall Room 212
6301 Kirkwood Blvd. SW
Cedar Rapids, Iowa 52406

Instructor:

Jamie Northrup, PMP is a Program Manager and Process Engineer at NCS Pearson in Iowa City, Iowa. A graduate of the University of Iowa, Jamie holds a BA Degree in Business Administration: Management Information Systems. He is certified as a PMP through the Project Management Institute and a core team member of the PMI OPM3 Second Edition team. He is trained in CMMI through the Software Engineering Institute at Carnegie Mellon University and has taught technology classes as an adjunct professor with Kirkwood Community College.

Cost:

The cost of the **December 12** class is **\$150.00 (\$199 dollars for non PMI members)**. There are no prerequisites to this course and all of the materials will be provided. Please make checks payable to: PMI, Eastern Iowa Chapter. Please mail checks to: P.O. BOX 1811, Cedar Rapids, IA 52401-1811. **Please have this form completed, and mailed, by COB 5th December 2005.** In addition to sending in the form please send an e-mail to trainingregistration@pmieasterniowa.org so that we can reserve your seat. Please forward any questions or concerns to professionaldevelopment@pmieasterniowa.org.

Required Sign-up Information

PMI Identification #:	State:
First Name, MI, Last Name:	Zip:
Address:	Phone #:
City:	E-mail:

Project Planning and Execution using MS Project

Course Description:

Successful Project Planning and Execution using MS Project: This course integrates project management theory and practice by introducing project managers to PMI endorsed project planning and execution while teaching students some of Microsoft® Project's more powerful capabilities. The class demonstrates how those capabilities can be used to transform project concepts into a manageable project schedule. It also demonstrates powerful and practical ways to track a schedule. The class is instructor led and includes many hands-on labs. The topics covered in "Successful Project Planning and Execution using MS Project" are as follows:

- Describe Project Planning and Tracking Concepts.
- Create a Work Breakdown Structure in MS Project.
- Create a Project Network Diagram in MS Project.
- Build an MS Project schedule with typical columns based on the Project Network Diagram.
- Identify Critical Path and Critical Dependencies in the schedule.
- Manage a Project Schedule to Critical Path.

Learning Objectives: In this class you will learn many powerful features of Microsoft® Project. Each student will understand the concepts necessary to create a manageable project schedule. Though a series of very helpful "hands on" labs, participants will gain insights into how to Microsoft® Project 'thinks' about project tasks, resources and calendars, and how to avoid common scheduling problems. Attendees who are Project Management Professionals (PMPs) will receive 4 Professional Development Unit credits with the PMI under category 4. For those who are not PMP certified, this class carries 4 Contact Credit Hours with the PMI. Please retain this registration and instructor bio with your records along with your certification for PMI auditing purposes.

Course Date & Location:

Monday, October 24 (5:00pm – 9:00pm)
Kirkwood Community College
Nielsen Hall Room 212
6301 Kirkwood Blvd. SW
Cedar Rapids, Iowa 52406

Instructor:

Jamie Northrup, PMP is a Program Manager and Process Engineer at NCS Pearson in Iowa City, Iowa. A graduate of the University of Iowa, Jamie holds a BA Degree in Business Administration: Management Information Systems. He is certified as a PMP through the Project Management Institute and a core team member of the PMI OPM3 Second Edition team. He is trained in CMMI through the Software Engineering Institute at Carnegie Mellon University and has taught technology classes as an adjunct professor with Kirkwood Community College.

Cost:

The cost of the October 24 class is **\$150.00 (\$199 dollars for non PMI members)**. There are no prerequisites to this course and all of the materials will be provided. Please make checks payable to: PMI, Eastern Iowa Chapter. Please mail checks to: P.O. BOX 1811, Cedar Rapids, IA 52401-1811. **Please have this form completed, and mailed, by COB 17 October 2005.** In addition to sending in the form please send an e-mail to trainingregistration@pmieasterniowa.org so that we can reserve your seat. Please forward any questions or concerns to professionaldevelopment@pmieasterniowa.org.

Required Sign-up Information

PMI Identification #:	State:
First Name, MI, Last Name:	Zip:
Address:	Phone #:
City:	E-mail:

Proactive Risk Management Class

Course Description:

Proactive Risk Management: This Risk Management class examines project risks from both a top-down and bottom-up perspective using a proven five-step risk management process. Participants will learn how to evaluate and respond to risk at the project and WBS task levels using effective tools and a highly regarded assessment model. Included in the class are a number of real world exercises that take you from risk identification at the beginning of a project through the challenges of ongoing assessment of risks throughout the project. You will practice a proactive approach to risk management - based on a clear understanding of the powerful nature of both qualitative and quantitative approaches to risk management.

Learning Objectives: In this class you will learn to: 1. Use a practical five-step process to manage project risk. 2. Identify risks and weigh their relative value in your project. 3. Control multiple risks using mitigation and contingency strategies. 4. Overcome psychological barriers to risk in stakeholders and team members. 5. Make ongoing risk management an integral component of your next project plan.

For attendees who are Project Management Professionals (PMPs), this class carries 4 Professional Development Unit (PDU) credits with the PMI under category 4. Please retain this registration and instructor bio with your records along with your certification for PMI auditing purposes.

Course Date & Location:

October 17 (5:00pm – 9:00pm)
Kirkwood Community College
Nielsen Hall 212
6301 Kirkwood Blvd. SW
Cedar Rapids, Iowa 52406

Instructor:

Jamie Northrup, PMP is a Program Manager and Process Engineer at NCS Pearson in Iowa City, Iowa. A graduate of the University of Iowa, Jamie holds a BA Degree in Business Administration: Management Information Systems. He is certified as a PMP through the Project Management Institute, and is trained in CMMI through the Software Engineering Institute at Carnegie Mellon University. Jamie has also taught technology classes as an adjunct professor with Kirkwood Community College.

Cost:

The cost of the **October 17** Proactive Risk Management class is **\$150.00** for chapter members and **\$199.00** for non-chapter members. There are no prerequisites to this course and all of the materials will be provided. Please make checks payable to: PMI, Eastern Iowa Chapter. Please mail checks to: P.O. BOX 1811, Cedar Rapids, IA 52401-1811. **This form must be completed, mailed, and received by COB 10 October 2005.** In addition to sending in the form please send an e-mail to trainingregistration@pmieasterniowa.org so that we can reserve your seat. Please forward any questions or concerns to professionaldevelopment@pmieasterniowa.org.

Required Sign-up Information	
PMI Identification #:	State:
First Name, MI, Last Name:	Zip:
Address:	Phone #:
City:	E-mail:



Building professionalism in project management.™

Project Management Institute
Eastern Iowa Chapter